

**EPSON**® ALL-IN-ONE  
**STYLUS**® **CX4600**



# Quick Reference

*Basic Copying, Printing, and Scanning*

*Maintaining Your CX4600*

*Solving Problems*

CPD-18250R1  
4049976-01  
XXX

# Contents

<b>Introduction</b> .....	<b>3</b>
<b>Loading Paper</b> .....	<b>4</b>
<b>Copying a Photo or Document</b> .....	<b>6</b>
Placing the Original on the Glass .....	<b>6</b>
Simple Copying .....	<b>8</b>
Using the Computer to Copy .....	<b>10</b>
<b>Printing From a Memory Card</b> .....	<b>13</b>
Compatible Cards and Image Formats .....	<b>13</b>
Inserting the Card .....	<b>14</b>
Printing an Index Sheet to Select Photos .....	<b>15</b>
Printing All Photos or DPOF Photos .....	<b>18</b>
<b>Printing From Your Computer</b> .....	<b>19</b>
Printing in Windows .....	<b>19</b>
Printing With Macintosh OS X .....	<b>22</b>
Using Special Papers .....	<b>25</b>
<b>Scanning a Photo or Document</b> .....	<b>26</b>
<b>Maintaining Your CX4600</b> .....	<b>29</b>
Checking the Print Head Nozzles and Ink .....	<b>29</b>
Cleaning the Print Head .....	<b>30</b>
Replacing Ink Cartridges .....	<b>31</b>
<b>Solving Problems</b> .....	<b>36</b>
Error Indicators .....	<b>36</b>
Problems and Solutions .....	<b>38</b>
Where To Get Help .....	<b>40</b>
<b>Notices</b> .....	<b>41</b>

# Introduction

After you have set up your Epson Stylus® CX4600 as described on the *Start Here* sheet, turn here to:

- Load paper
- Make a quick copy of a document or photo
- Print photos stored on a memory card
- Get the basic steps for printing from your computer
- Start scanning a document or photo
- Perform routine maintenance
- Solve simple problems

This book tells you how to do most of these things without ever turning on your computer! Of course your CX4600 can do lots more when you connect it to your Windows® or Macintosh® computer—such as improving the color and quality of your prints and scanned images or producing double-sided documents.

For complete instructions on everything the CX4600 can do, see the on-screen *CX4600 Reference Guide*. An icon for the manual was automatically placed on your desktop when you installed the software.

Please follow these guidelines as you read your CX4600 instructions:

**Warning:**

Warnings must be followed carefully to avoid bodily injury.

**Caution:**

Cautions must be observed to avoid damage to your equipment.

**Note:**

Notes contain important information about your CX4600.

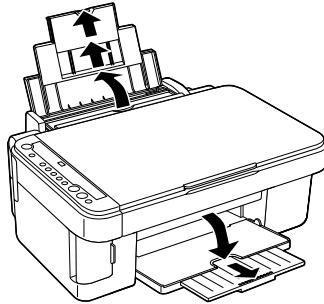
**Tip:**

Tips contain hints for better copying, scanning, and printing.

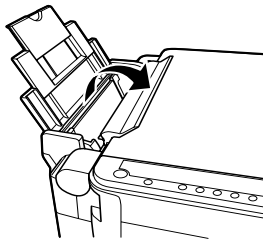
# Loading Paper

Follow the steps below to load letter-size or 4 × 6-inch paper in your CX4600. (See the *Reference Guide* for instructions on loading other types of media.)

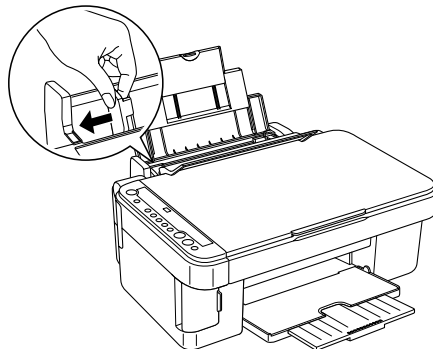
1. Open the paper support and output tray, then slide out the extensions.



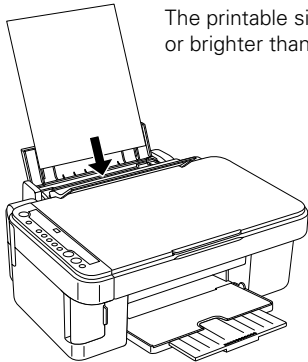
2. Flip the feeder guard forward.



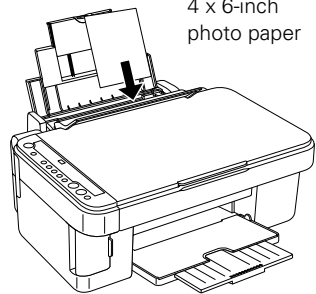
3. Slide the left edge guide to the left.



4. Insert the paper, printable side up, against the right edge guide. Always load it short edge first, even for landscape printing.



The printable side is often whiter or brighter than the other side.

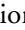


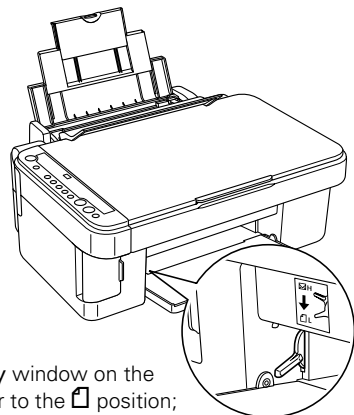
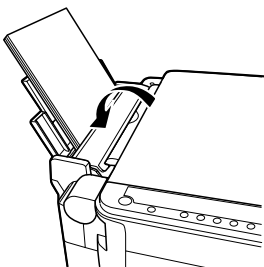
4 x 6-inch photo paper

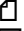

You can load up to 100 sheets of plain paper and up to 20 sheets of photo paper. (See the *Reference Guide* for capacity guidelines on other media types.)

**Note:**

The type of paper you choose affects the way your printout looks, so be sure to select the correct media for your job. If you are just making a copy or printing a rough draft of an image, plain paper is fine. However, for the best results, you'll want to use one of Epson's special ink jet papers designed for your printer. For example, your photos will look great printed on Epson DURABrite® Ink Glossy Photo Paper. See page 25 for more information.

5. Slide the left edge guide against the left edge of the paper (but not too tightly).
6. Flip the feeder guard back. Also make sure the paper thickness lever is set down to the  position.



The letter L appears briefly in the **Copy** window on the control panel when you move the lever to the  position; the letter H appears when you move it to the  position.

# Copying a Photo or Document

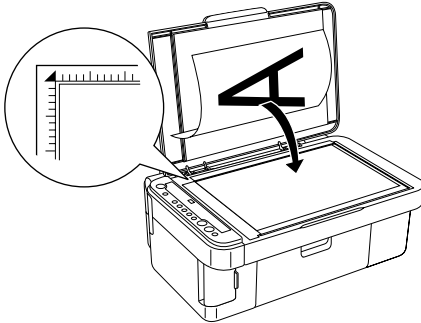
Follow the instructions in this section to:

- Position your photo or document correctly on the glass (see below)
- Make simple copies of a photo or document (on page 8)
- Control copying from your computer using the EPSON Smart Panel™ Copy Utility (on page 10)

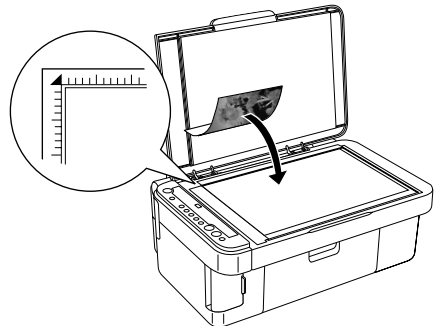
---

## Placing the Original on the Glass

1. Open the document cover and place your original face-down on the glass, in the upper left corner. Move your original about 1/10 inch away from the top and left edges so all of it will be copied.



Move the original about 1/10 inch (2.5 mm) away from the top and left edges to avoid cropping

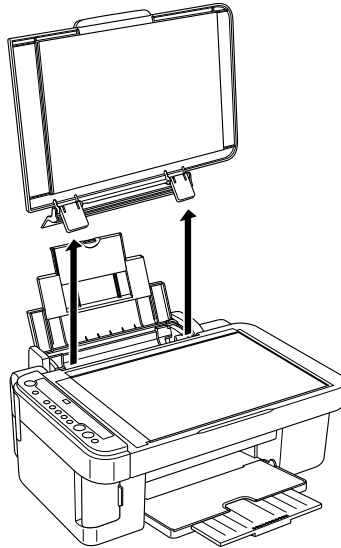


2. Close the cover gently so you don't move the original.

**Caution:**

Never open the document cover beyond where it stops and do not place heavy objects on top of the CX4600.

If you need to copy or scan a thick or large document, you can remove the document cover. Just open it and pull it straight up.



If you need to press the document flat while you copy or scan it, do not press too hard and be careful not to move it.

**Caution:**

Do not use excessive force on the document cover, and do not twist it diagonally. You may damage the document cover.

When you are done, replace the document cover by inserting the tabs back into the slots.

# Simple Copying

You can make simple copies using either letter-size (8.5× 11-inch) or 4× 6-inch paper as described below. If you want to copy to a different size, you need to do it from your computer. See “Printing From Your Computer” on page 19 or your on-screen *Reference Guide* for instructions.

## Copying a Letter-size Document

1. Make sure the CX4600 is turned on.
2. Place the document on the glass as described on page 6. Be sure to close the document cover.
3. Load letter-size paper. (See page 4 if you need instructions.)
4. Press the **Copy** button until you see the desired number of copies in the **Copy** window. You can select up to 9 copies at a time this way.

To make more than 9 copies, see page 10.

5. Press the paper type button to select **Plain Paper**. The light indicates which type is selected.
6. Press the paper size button to select **Letter**.
7. If you want your copies automatically reduced or enlarged to fit the loaded paper size, press the **Fit to Page** button.
8. To make a color copy, press the **Start Color** button.

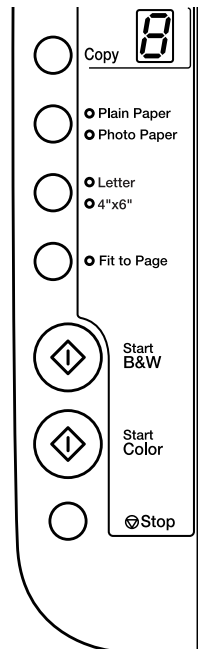
To make a black and white copy, press the **Start B&W** button.

The **On** light flashes and after a moment the CX4600 starts printing.

If you need to stop copying at any time, just press the **Stop** button. Do not pull out paper that is being printed; it will be ejected automatically to the output tray.

### Note:

The copies may not be exactly the same size as the original.





## Copying a Photo



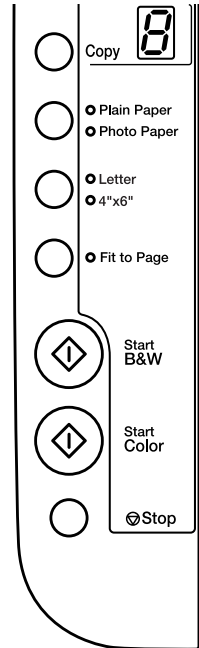
1. Make sure the CX4600 is turned on.
2. Place the photo on the glass as described on page 6. Be sure to close the document cover.
3. Load up to 20 sheets of 4 × 6-inch photo paper. (See page 4 if you need instructions.)

4. Press the **Copy** button until you see the correct number of copies in the **Copy** window. You can select up to 9 copies at a time this way.

To make more than 9 copies, see page 10.

5. Press the paper type button to select **Photo Paper**.
6. Press the paper size button to select **4"×6"**.
7. If you want your photos printed without a white border, press the **Fit to Page** button. (Otherwise, they are printed with a .06-inch [1.5 mm] margin.)
8. To make a color copy, press the **Start Color** button.

To make a black and white copy, press the **Start B&W** button.



The **On** light flashes and after a moment the CX4600 starts printing.

If you need to stop copying at any time, just press the **Stop** button. Do not pull out paper that is being printed; it will be ejected automatically to the output tray.

### Note:

The copies may not be exactly the same size as the original.

## ***Making 10 or More Copies***

If you want to make 10 or more copies at a time, press the **Copy** button until you see “–” in the **Copy** window. This tells the CX4600 to print up to 100 copies. Load enough paper for the number of copies you want to make (up to 100) and start copying.

The CX4600 will continue making copies until it runs out of paper. Then the red **Error** light comes on. To make more copies, load more paper and press the **Start** button to resume. If you don't need any more copies, press the **Stop** button.

### **Note:**

When making a lot of copies, it is a good idea to remove the printed copies from the output tray after every 10 sheets or so.

## ***Speeding Up Printing***

If you want to make a copy quickly and do not need high quality, you can print a “draft” copy. The print quality is reduced, but the copy is printed faster.

Load plain, letter-size paper and select **Plain Paper** and **Letter** size on the control panel. When you are ready to copy, press and hold down the **Stop** button, then press the **Start Color** button (to copy in color) or the **Start B&W** button (to copy in black and white). When the **On** light starts flashing, release both buttons.

---

## **Using the Computer to Copy**

EPSON Smart Panel (installed on your computer when you installed your printer software), includes a **Copy Utility** that lets you control copying from your computer. Follow these steps to use it:

1. Make sure the CX4600 is turned on.
2. Place the original on the glass as described on page 6. Be sure to close the document cover.

3. Open EPSON Smart Panel.

**Windows:** Select EPSON Smart Panel from the desktop or click Start > All Programs or Programs > EPSON Smart Panel> EPSON Smart Panel.

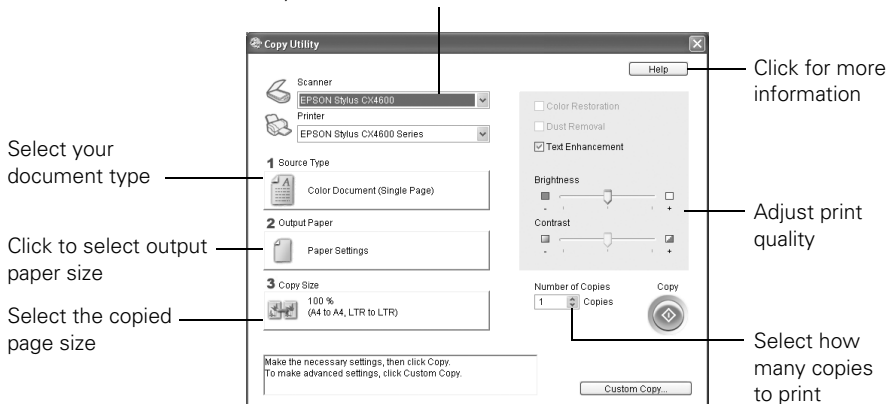
**Macintosh:** Double-click EPSON Smart Panel on the desktop or select it in the Applications folder and then select EPSON Smart Panel.

You see this screen:



4. Click the Copy/Reprint Photos icon. You see this screen:

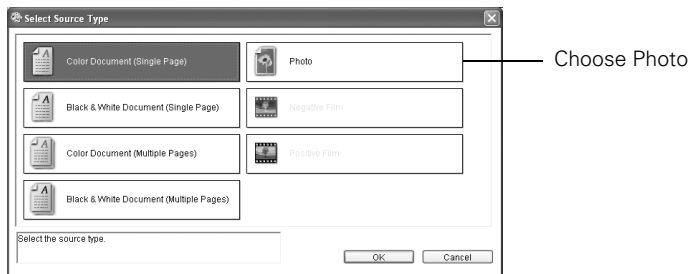
Make sure EPSON Stylus CX4600 is selected



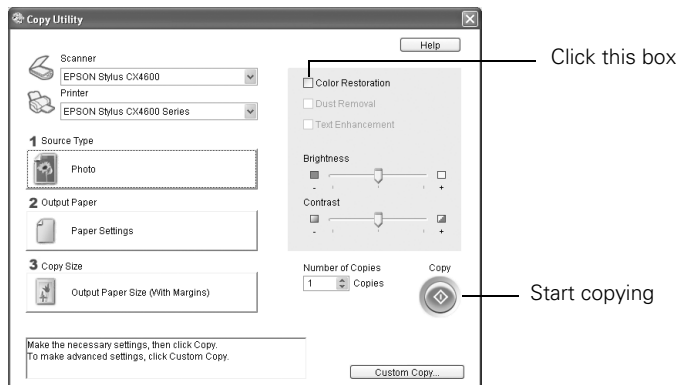
From here you can choose the size and number of copies you want to make and whether to print them in color or black and white. You can also lighten or darken the copies or enhance the image quality or color. For example, you can use the Color Restoration feature, as described on page 12, to bring faded photographs back to life.

## Restoring Color in Faded Photos

1. From the Copy Utility screen, click the **Source Type** box. You see this screen:



2. Choose **Photo** and click **OK**. You see this screen:



3. Click the **Color Restoration** check box.
4. Change any other copy settings, as necessary.
5. Click the **Copy** button on the screen to begin copying.

# Printing From a Memory Card

The CX4600 lets you print photos directly from your digital camera's memory card; just plug it into the CX4600's memory card slot and you're ready to print.

If your digital camera supports DPOF (Digital Print Order Format), you can pre-select the photos you want to print while the card is still in the camera. Then, when you insert the card in the CX4600, it knows which photos to print and how many copies of each.

See these sections:

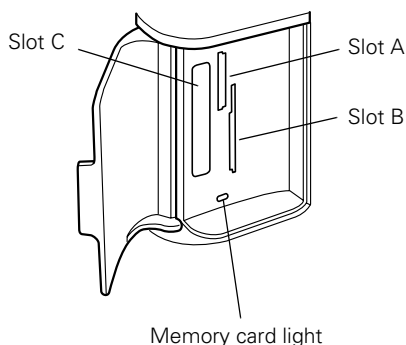
- “Compatible Cards and Image Formats” (below)
- “Inserting the Card” on page 14
- “Printing an Index Sheet to Select Photos” on page 15
- “Printing All Photos or DPOF Photos” on page 18

For instructions on copying memory card files between your CX4600 and a computer or other device, see the *Reference Guide*.

---

## Compatible Cards and Image Formats

You can use the following types of cards with your CX4600:



Slot	Type of card
A	Memory Stick MagicGate™ Memory Stick MultiMediaCard Memory Stick Duo™* Memory Stick PRO™ Memory Stick Pro Duo™* SD™ Card miniSD™ Card *
B	SmartMedia™ xD-Picture Card
C	CompactFlash™ Microdrive™

\* Adapter required.

The CX4600 supports image files that meet the following requirements:

Media format	DCF version 1.0 compliant*
File format	JPEG**, DOS FAT (FAT 12 or 16, one partition) taken with a DCF version 1.0 compliant digital camera
Image size	Vertical 120 to 4600 pixels, horizontal 120 to 4600 pixels
Number of files	Up to 999

\* DCF is the "Design rule for Camera File system" standard, which is set by the Japan Electronics and Information Technology Industries Association (JEITA)

\*\* Supports Exif Version 2.1/2.2

---

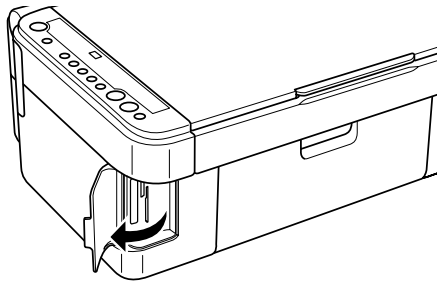
## Inserting the Card

1. Make sure the CX4600 is turned on.

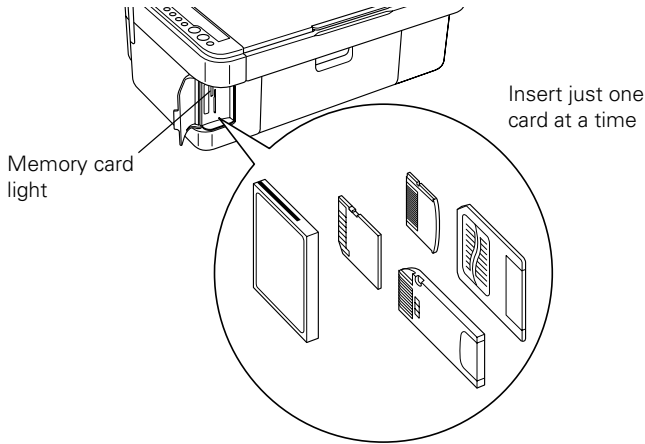
**Note:**

When you are printing directly from a memory card, it is best if the CX4600 is not connected to your computer (or your computer should be turned off).

2. Open the memory card door.



3. Make sure the memory card light is off and that no cards are in any of the slots. Then insert your card into the correct slot. (See page 13 for details.)



The memory card light flashes and then stays on.

4. Close the memory card door. Now you can:
  - Print an index sheet so you can select which photos to print (page 15)
  - Print all the photos on the card (page 18)
  - Print photos pre-selected on your camera using DPOF (page 18)

When you want to remove the card, make sure the memory card light is not flashing, then pull the card straight out of its slot.

**Note:**

You can print only in color when printing directly from a memory card; you cannot print in black and white.

**Caution:**

Do not remove the card or turn off the CX4600 while the memory card light is flashing; you may lose data on the card.

---

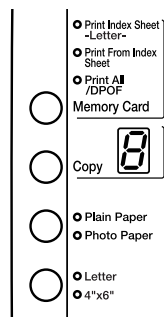
## Printing an Index Sheet to Select Photos

You can print an index sheet (which is like a photographer's contact or proof sheet) to see small "thumbnail" images of all the pictures on your card. Then you mark the pictures on the index sheet that you want to print, scan the sheet, and let the CX4600 automatically print the selected photos.

## Printing the Index Sheet

1. Make sure your CX4600 is not connected to your computer (or your computer is turned off).
2. Load several sheets of letter-size, plain paper. (Use only letter-size paper to print the index sheet.) Up to 30 images are printed on each page, so if there are more than 30 photos on the memory card, you'll need enough sheets for all the index pages to be printed.
3. Insert the memory card if it is not already in the slot (see page 14).
4. Press the **Memory Card** button one or more times until the **Print Index Sheet** light comes on.
5. Make sure **Plain Paper** and **Letter** are selected.
6. Press the **Start Color** button. The **On** light flashes, and the CX4600 starts printing the index sheet(s). (This may take a few minutes.)

For multiple index sheets, the pages are printed from the last sheet to the first, so the most recent images are printed first.



Now you can follow the instructions below to select which photos to print.

## Selecting Photos on the Index Sheet

1. Once you have printed the index sheet, use a dark pen or pencil to fill in one of the ovals beneath each photo you want to print to indicate how many copies you want (1, 2, or 3).

OK:



No good:



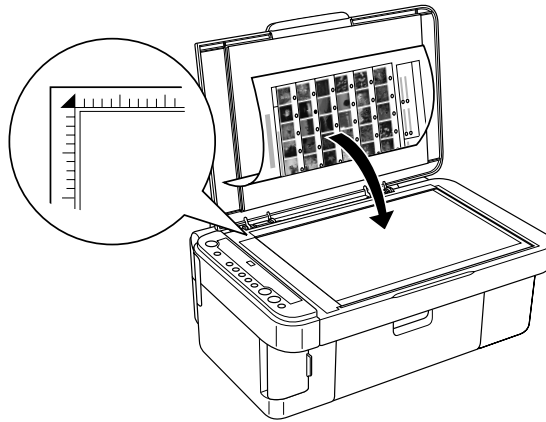
Make sure just one oval is filled in for each selected photo and mark the sheet carefully; once it has been scanned you will not be able to change your selections.

### Note:

If you want one copy of all the photos on the index sheet, fill in the **ALL** oval at the top of the page.



- Place the index sheet face-down on the glass, in the upper left corner, so that the top of the sheet is aligned against the left edge of the glass.



- Close the document cover.
- Load the type of paper you want to use (see page 4). Load enough sheets for the number of photos you'll be printing.
- Make sure the **Print From Index Sheet** light is on.
- Select **Plain Paper** or **Photo Paper** (whichever you loaded).

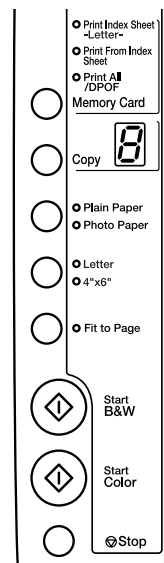
If you select **Plain Paper**, the photo(s) print with a white border. If you select **Photo Paper**, the photos print borderless, to the edge of the paper.

- Select **Letter** or **4" x 6"** for the paper size.
- Press the **Start Color** button to start printing.

**Note:**

If you need to stop printing, press the **Stop** button.

- When you are done printing, remove the memory card by pulling it straight out of its slot.



# Printing All Photos or DPOF Photos

Follow the steps below to print one copy of each photo on the card or to print only those photos that were pre-selected with your camera's DPOF feature.

1. Insert the memory card (see page 14).
2. Load the type of paper you want to use (see page 4). Load enough sheets for the number of photos you'll be printing.
3. Press the **Memory Card** button until the **Print All/DPOF** light comes on.

**Note:**

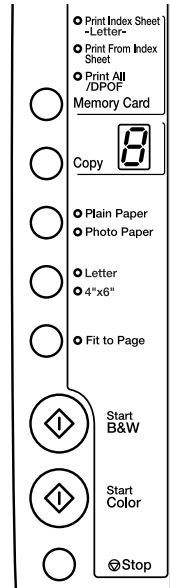
If the memory card does not contain DPOF information, one copy of all the photos on the card will be printed.

4. Select **Plain Paper** or **Photo Paper** (whichever you loaded). If you select **Photo Paper**, the photos print borderless, to the edge of the paper.
5. Select **Letter** or **4"x6"** for the paper size.
6. Press the **Start Color** button to start printing.

**Note:**

If you need to stop printing, press the **Stop** button.

7. When you are done printing, remove the memory card by pulling it straight out of its slot.



# Printing From Your Computer

This section describes the basic steps for printing a photo or document stored on your Windows or Macintosh computer.

## Note:

For detailed instructions on printing, see the on-screen *Reference Guide*.

Before you start, make sure you've installed your printer software and connected the CX4600 to your computer as described on the *Start Here* sheet. Also be sure to use the right paper and select the correct paper Type or Media setting in the printer driver. (See page 25 for more information.)

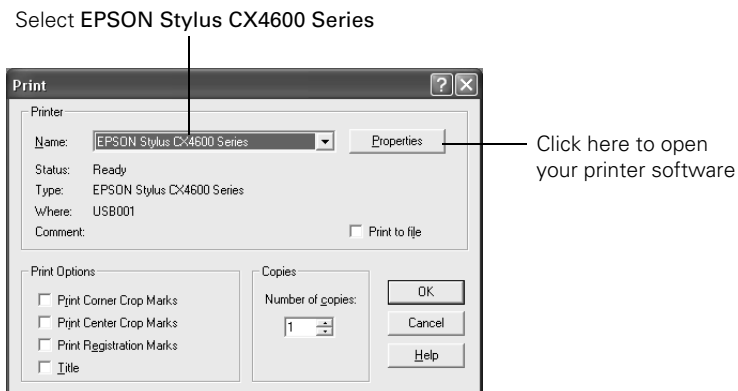
Follow the instructions in these sections:

- “Printing in Windows” (below)
- “Printing With Macintosh OS X” on page 22
- “Using Special Papers” on page 25

---

## Printing in Windows

1. Load paper (see page 4).
2. Open the photo or document in your application program.
3. Open the File menu and select **Print**. You see a window like this one:



4. Make sure EPSON Stylus CX4600 series is selected, then click the Preferences or Properties button.

(If you see a Setup, Printer, or Options button, click it. Then click Preferences or Properties on the next screen.)

5. On the Main Properties window, select the basic print settings:

Select the type of document you're printing  
(choose Photo or Best Photo for pictures)

The screenshot shows the 'EPSON Stylus CX4600 Series Properties' dialog box. It has three tabs: 'Main', 'Page Layout', and 'Maintenance'. The 'Main' tab is active. Under 'Quality Option', there are five icons: Draft, Text, Text & Image (selected), Photo, and Best Photo. Below this is the 'Paper Options' section with a 'Borderless' checkbox, a 'Type' dropdown menu set to 'Plain Paper / Bright White Paper', and a 'Size' dropdown menu set to 'Letter (8 1/2 x 11 in)'. To the right is the 'Print Options' section with checkboxes for 'PhotoEnhance', 'Reverse Order', and 'Print Preview'. The 'Ink Levels' section shows four ink level indicators. The 'Orientation' section has radio buttons for 'Portrait' (selected) and 'Landscape', and a printer icon. At the bottom are buttons for 'Reset Defaults', 'Online Support', 'Show Settings', 'Advanced', 'OK', 'Cancel', and 'Help'. Annotations with arrows point to various elements: 'Select your paper Type' points to the Quality Option icons; 'Select your paper Size' points to the Paper Options dropdowns; 'Click here for borderless photos, after choosing paper Type' points to the Borderless checkbox; 'Select your document Orientation' points to the Orientation radio buttons; and 'Click here for more options' points to the Advanced button.

Make sure you choose the correct paper Type setting for the paper you are using. See page 25 for details.

**Note:**

For more information about print settings, click the ? or Help button.

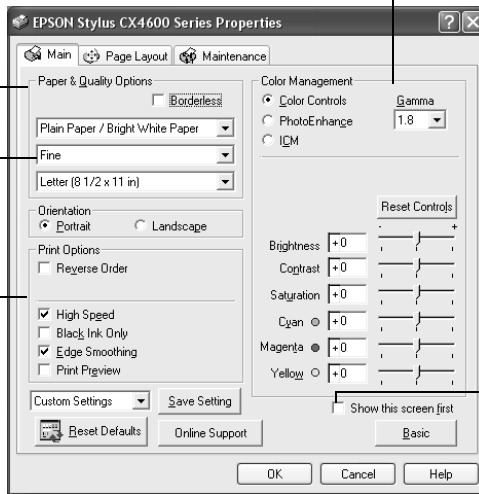
- For more printing options, click the **Advanced** button. Then select the following settings as necessary:

Select a color management method  
(To choose **No Color Adjustment**, click **ICM** first)

Select **Paper & Quality Options** as necessary

Click here to select **Photo RPM** for the best print quality on certain paper types

Select **Print Options** as necessary

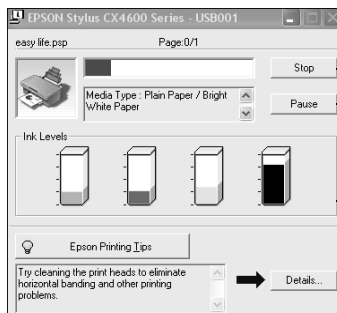


Click here if you want to see this Advanced screen each time you access your print settings

**Note:**

For more information about advanced settings, or instructions on saving them as a group so you can reuse them later, click **?** or **Help**.

- If you want to change the layout settings, click the **Page Layout** tab and select settings as necessary.
- Click **OK** to save your settings, then click **OK** or **Print** to start printing. This window appears and shows the progress of your print job.



Click to cancel printing

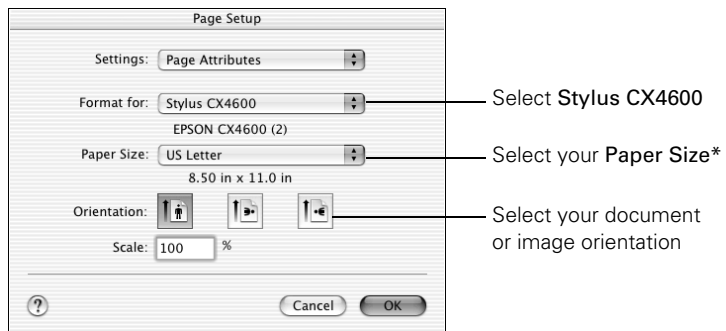
Pause or resume printing

Check remaining ink levels here

# Printing With Macintosh OS X

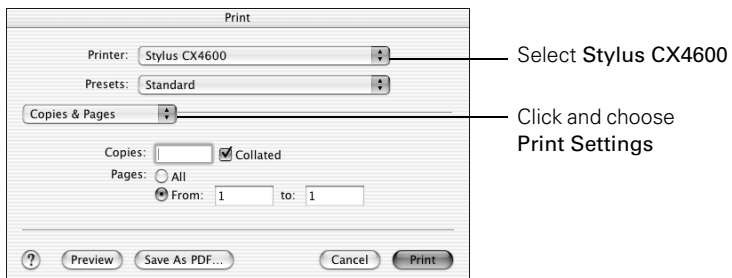
If you're using an OS X-compatible application, follow the steps below to print. (If you're using OS 9 or an application that's compatible only with Macintosh Classic mode, see the *Reference Guide*.)

1. Load paper (see page 4).
2. Open the photo or document in your application.
3. Select **Page Setup** from the File menu. Make the following settings:

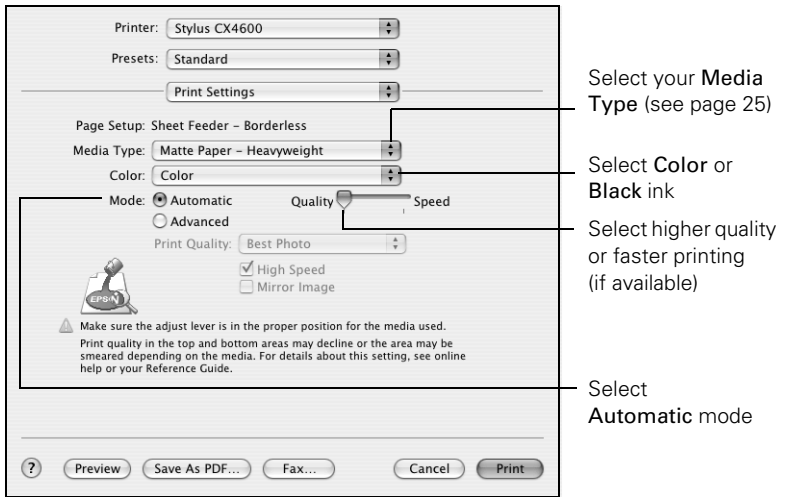


\* For Borderless printing, choose the **(Sheet Feeder - Borderless)** option in the Paper Size list for your paper size (**Letter, 8 x 10, or 4 x 6**).

4. Click **OK** to close the Page Setup window.
5. Select **Print** from the File menu. You see a window like this one:



6. Choose **Print Settings** from the pull-down list and select the following settings as necessary:



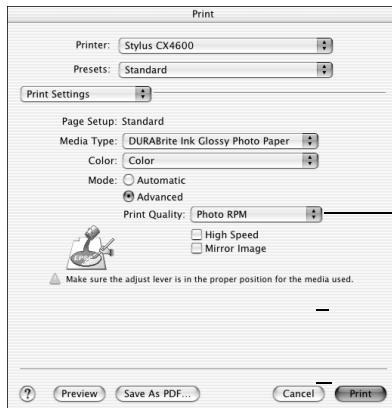
**Note:**

For more information about printer settings, click the ? button.

7. Depending on your settings, you can choose other options from the pull-down list such as:

- **Copies & Pages:** Select the number of copies you want, or a page range.
- **Layout:** Select page layout options.
- **Output Options:** Save your print job as a PDF file.
- **Expansion:** Reduce or enlarge the image size for borderless printing.
- **ColorSync or Color Management:** Select ColorSync® or adjust the color controls, change the gamma setting, or turn off color adjustments in the printer software.
- **Summary:** View a list of all your selections.

8. Click the **Advanced** button to change these settings:





Select **Photo RPM** for the best print quality on certain paper types

**Note:**

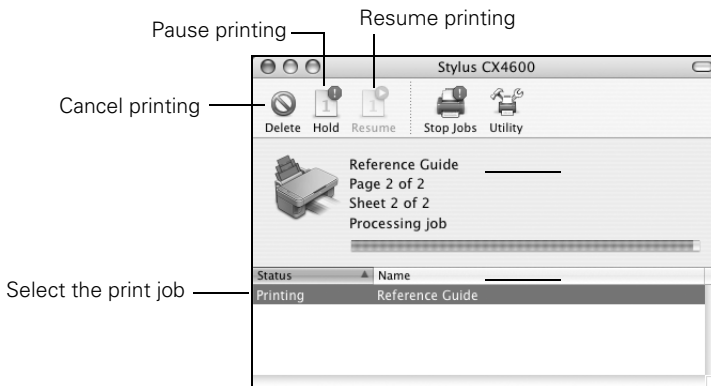
For more information on advanced settings, or instructions on saving them as a group so you can reuse them later, click ?.

9. Click **Print**.

10. To monitor the progress of your print job, click the  CX4600 icon when it appears in the dock on the bottom of your desktop.

If you're using OS X 10.2.x, click the  Print Center icon instead, then double-click **Stylus CX4600** in the Printer List window.

You see a screen like this:



11. When you're finished, close the CX4600 window or Print Center.



# Using Special Papers

For the best results, use the following special Epson papers. To order, contact your dealer or call the Epson Store<sup>SM</sup> at (800) 873-7766, or visit [www.epsonstore.com](http://www.epsonstore.com) (U.S. sales only). In Canada, please call (800) 463-7766 for dealer referral.

Paper name	Size	Part number
Epson DURABrite Ink Glossy Photo Paper (recommended for photography)	Borderless 4 × 6 inches	S041734
	Letter (8.5 × 11 inches)	S041731
Epson Premium Bright White Paper	Letter (8.5 × 11 inches)	S041586
Epson Glossy Photo Paper	Borderless 4 × 6 inches	S041809
	Letter (8.5 × 11 inches)	S041141/S041649/ S041272/S041271
Epson Matte Paper Heavyweight	Borderless 8 × 10 inches	S041467
	Letter (8.5 × 11 inches)	S041257
Epson Double-Sided Matte Paper	Letter (8.5 × 11 inches)	S041568
Epson Premium Semigloss Photo Paper	Letter (8.5 × 11 inches)	S041331
Epson Photo Quality Self Adhesive Sheets	A4 (8.3 × 11.7 inches)	S041106
Epson Glossy Photo Greeting Card Kit	Letter (8.5 × 11 inches)	S041606
Epson Photo Quality Ink Jet Paper	Letter (8.5 × 11 inches)	S041062
	A4 (8.3 × 11.7 inches)	S041061
	Legal (8.3 × 14 inches)	S041067
Epson Photo Quality Ink Jet Cards	A6 (4.1 × 5.8 inches)	S041054
Epson Photo Paper	Panoramic (8.3 × 23 inches)	S041145

## Selecting Your Paper Type

Be sure to select the correct **Type** or **Media Type** setting in your printer software:

For this paper	Select this setting
DURABrite Ink Glossy Photo Paper	DURABrite Ink Glossy Photo Paper
Plain paper sheets or envelopes Epson Premium Bright White Paper	Plain Paper/Bright White Paper
Epson Matte Paper Heavyweight Epson Double-Sided Matte Paper	Matte Paper - Heavyweight
Epson Photo Paper or Glossy Photo Paper Epson Glossy Photo Greeting Cards	Glossy Photo Paper
Epson Premium Semigloss Photo Paper	Premium Semigloss Photo Paper

# Scanning a Photo or Document

You can use the CX4600 to scan a photo or document and save it on your computer or other device, or to fax or e-mail it to someone else. This section gets you started using EPSON Scan.

## Note:

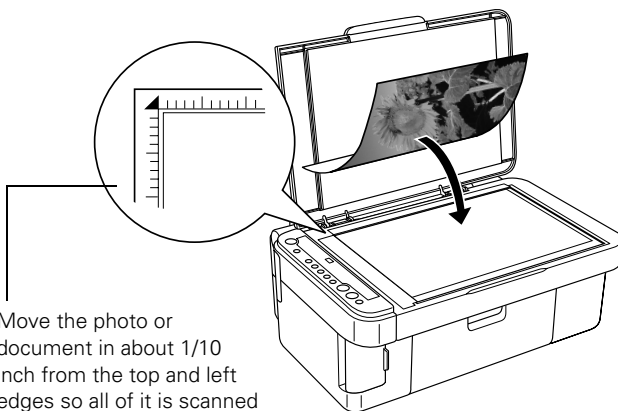
You can also use EPSON Smart Panel to scan. See the *Reference Guide* (or Smart Panel Help) for more information.

EPSON Scan provides three scanning modes for progressive levels of control over your scanned image:

- **Full Auto Mode** makes scanning quick and easy, with automatic image type and resolution settings.
- **Home Mode** provides a simple screen giving you automatic image adjustments, previewing and cropping capability, and preset configurations for various types of scans. Includes Color Restoration.
- **Professional Mode** lets you manually configure advanced image settings, including Color Restoration.

You can scan from any TWAIN-compliant application—such as Adobe® Photoshop®—using EPSON Scan. Or you can start EPSON Scan directly from your computer and save your image to a file.

1. Place your photo or document face-down on the glass in the upper left corner about 1/10 inch from the edges, as shown.



**Note:**

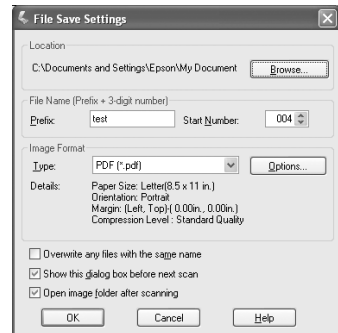
If you need to scan a thick document, you can remove the document cover. See page 7.

2. Close the cover gently so you don't move the original.
3. If you are scanning from an application, start your application. Then open the File menu and choose **Import** or **Acquire** and select **EPSON Stylus CX4600**. If EPSON Scan is set to the default Full Auto Mode, it starts previewing your image. To switch modes, click the **Pause** button at the bottom of the screen. Then go to step 4.

If you are scanning directly from your desktop, do one of the following:

- In Windows, select **Start > All Programs or Programs > EPSON Scan > EPSON Scan**.
- On a Macintosh, double-click **EPSON Scan** in the Applications folder.

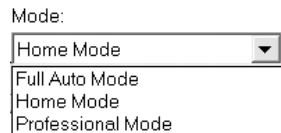
If you see the File Save Settings window, choose the location where you want to save your scanned file and type a name for it in the Prefix box. Select a file format in the Image Format box. Then click **OK**. The image is scanned and you see its icon in the open folder.



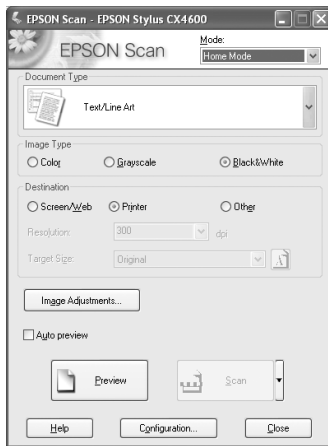
4. To change modes, select **Home Mode** or **Professional Mode** from the Mode pull-down menu at the top of the screen.

**Note:**

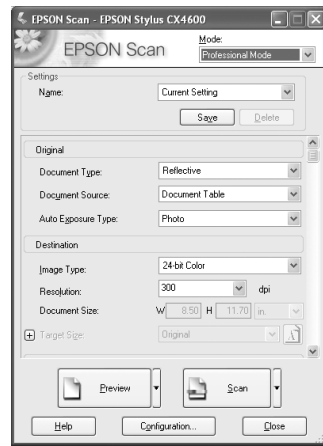
EPSON Scan starts in the mode you used last, but you can change the mode at any time.



You see one of the following screens:



Home Mode



Professional Mode

5. Click the **Preview** button. After a moment, your image appears in the Preview window.
6. Choose the **Document Type**, **Image Type**, and **Destination** settings (in Home mode) or the **Original** and **Destination** settings (Professional mode) that match the type of image you're scanning and the way you want to print or view it. Size and adjust your image settings as necessary.

**Note:**

Click **Help** for detailed information about all the available settings.

You can restore the color in faded photographs in Home or Professional mode. If you're using Professional mode, scroll down to the bottom of the screen, and click the **Color Restoration** check box. In Home mode, you need to Preview the photo first (step 5, above), then select **Image Adjustments** and click the **Color Restoration** check box.

7. Click the **Scan** button. If you scanned from an application like Photoshop, your scanned image opens in your application window.

If you opened EPSON Scan from the **Start** button or the Applications folder, and you did not already select a file name and destination (step 3), you see the File Save Settings window. Type a name for your file in the Prefix box, select a file format in the Image Format box, and click **OK**. The image is scanned and saved in the folder that opens.

8. Click **Close** to exit EPSON Scan.

# Maintaining Your CX4600



If you notice a decline in print quality, follow the instructions in this chapter for:

- “Checking the Print Head Nozzles and Ink” (below)
- “Cleaning the Print Head” on page 30
- “Replacing Ink Cartridges” on page 31

---

## Checking the Print Head Nozzles and Ink

If your printouts are faint or have gaps in them, some of the nozzles in the print head may be clogged or ink may be running low in one or more of the ink cartridges. Follow the steps below to check the print head nozzles and remaining ink levels using the control panel.

1. Turn off the CX4600.
2. Load letter-size paper in the sheet feeder.
3. Press the  ink and  On buttons together and hold them down for about 5 seconds. The CX4600 turns on and prints a test pattern. It also shows the percentage of ink left in each cartridge:

Print head does not need to be cleaned yet:



Print head needs to be cleaned:



If the pattern does not look good, try cleaning the print head as described in the next section.

**Note:**

You can also check the ink level using Status Monitor 3; see the *Reference Guide*.


---



# Cleaning the Print Head

If your printouts are unexpectedly light or faint, or you notice light or dark bands across your printout, you may need to clean the print head. This unclogs the nozzles so they can deliver ink properly. Run a nozzle check as described on page 29 to see if the print head needs cleaning.

**Note:**

Print head cleaning uses ink, so clean it only if quality declines and the nozzle check indicates that the print head needs to be cleaned.

If the red  ink light comes on or flashes, you cannot clean the print head. In this case, replace the appropriate ink cartridge first. (See page 31.)

1. Make sure the CX4600 is on and the  ink light is off.
2. Hold down the  ink button for 3 seconds until the **On** light starts flashing. The CX4600 runs a head cleaning cycle and the **On** light flashes.

**Caution:**

Never turn off the CX4600 while head cleaning is in progress. You may damage it.

3. When the **On** light stops flashing, run a nozzle check (as described on page 29) to verify that the print head is clean.
4. If there are still gaps or the test patterns are faint, run another cleaning cycle and check the nozzles again.

**Note:**


If you don't see any improvement after cleaning the print head four or five times, turn off the CX4600 and wait overnight. This lets any dried ink soften. Then try cleaning the print head again. If quality still does not improve, one of the ink cartridges may be old or damaged and needs to be replaced. See the next section.


**Tip:**

If you do not use your CX4600 often, it is a good idea to print a few pages at least once a month to maintain good print quality.

---

# Replacing Ink Cartridges

When the red  ink light starts flashing, one or more cartridges are low on ink.

When the red  ink light stays on, you need to replace the cartridge(s).

You'll also see a message on your screen when you print, telling you which cartridge is low or empty.

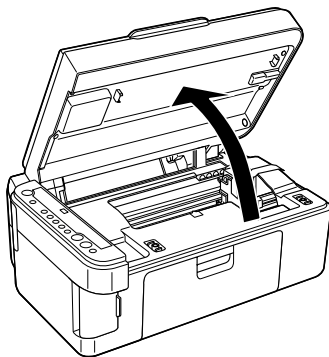
You can purchase ink cartridges from the Epson Store at (800) 873-7766 or visit [www.epsonstore.com](http://www.epsonstore.com) (U.S. sales only). In Canada, please call (800) 463-7766 for dealer referral. Use these part numbers when you order or purchase new ones.

Color	Part number
Black	T044120
Cyan	T044220
Magenta	T044320
Yellow	T044420

**Caution:**




Leave the empty cartridge installed until you have obtained a replacement, or the ink remaining in the print head nozzles may dry out. To ensure good results, use genuine Epson ink cartridges and do not refill them. Other products may cause damage to your CX4600 not covered by Epson's warranty.

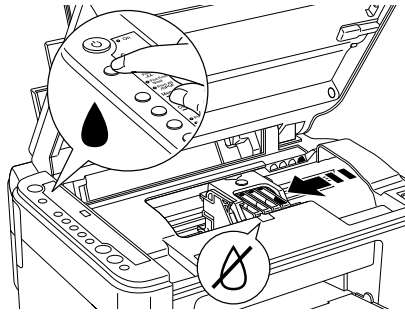
1. Make sure the CX4600 is on.
2. Make sure that the document cover is closed, then open the scanner.




**Caution:**

Do not open the scanner when the document cover is open.


3. Press and release the  ink button. The ink cartridge holder moves to the check position and the On and  ink lights flash. If one of the cartridges is low or empty, the CX4600 moves that cartridge to the  ink out mark.






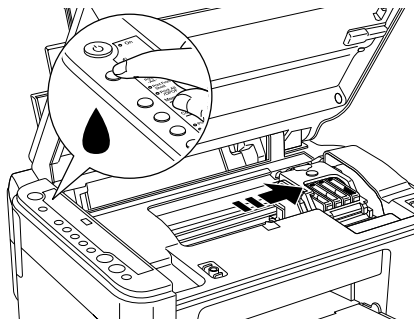
**Note:**

Do not hold down the  ink button; when held down for 3 or more seconds, it tells the printer to start cleaning the print head.

**Caution:**

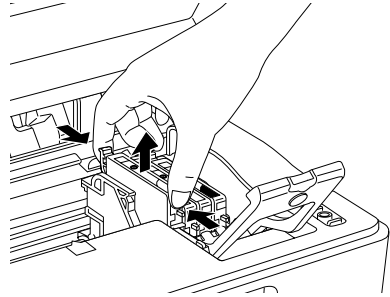
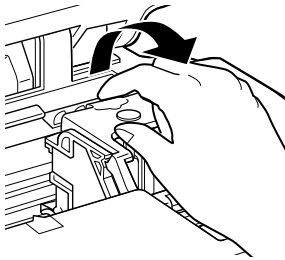
Do not move the print head by hand; this may damage the CX4600. Always press the  ink button to move it.

4. Press the  ink button again.
  - If more than one cartridge is empty or low, the next cartridge moves to the  ink out mark.
  - If all of the empty or low ink cartridges have been identified, the print head moves to the ink cartridge replacement position when you press the  ink button.





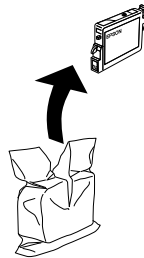
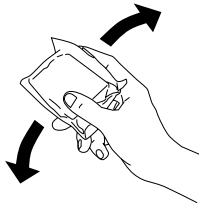
5. Open the cartridge cover and squeeze the tab at the back of the empty/low cartridge and lift it straight out. Dispose of it carefully. Do not take the used cartridge apart or try to refill it.



**Warning:**

If ink gets on your hands, wash them thoroughly with soap and water. If ink gets into your eyes, flush them immediately with water.

6. Before you open the new ink cartridge package, shake it four or five times. Then remove it from the package.

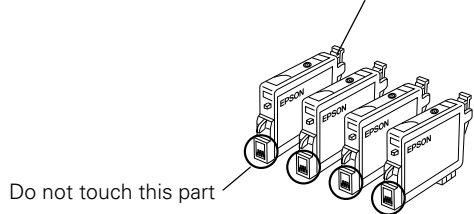


**Caution:**

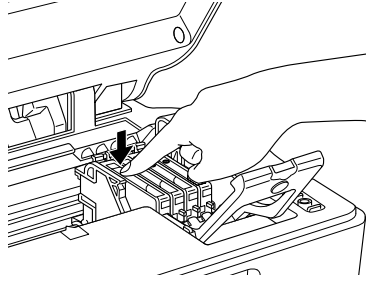
Do not remove or tear the label on the cartridge; otherwise, ink will leak.

Do not touch the green chip on the side of the cartridge. This can damage the ink cartridge.

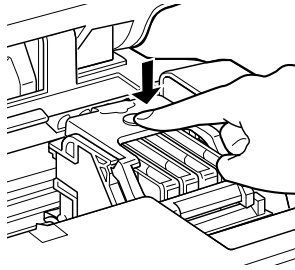
Do not damage the tab



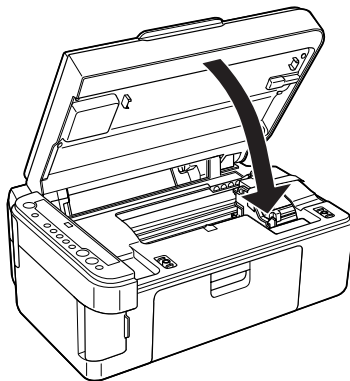
7. Place the new ink cartridge into the cartridge holder and push it down until it clicks into place.





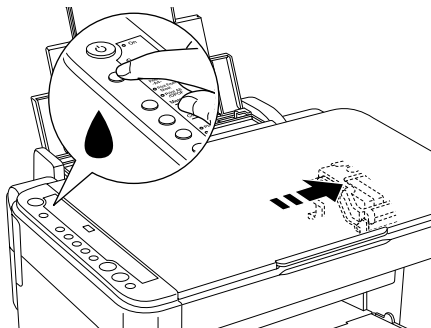
8. Replace any other cartridges that need to be replaced.
9. Close the ink cartridge cover and press it until it clicks into place.



10. Close the scanner.





11. Press the  ink button. The CX4600 begins charging ink and the **On** light starts flashing. This takes about one minute. When it's finished, the **On** light stops flashing and remains on, and the  ink light goes out.



**Caution:**

Never turn off the CX4600 while the **On** light is flashing or you'll waste ink.

**Note:**

If the  ink light stays on (not flashing), the ink cartridge may not be installed correctly. Press the  ink button again and reinstall the ink cartridge until it clicks into place.

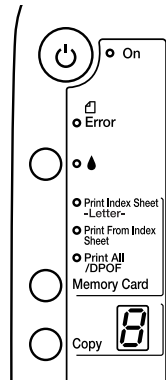
# Solving Problems

If you have a problem with your Stylus CX4600, check the lights on the control panel and the number or letter in the Copy window to diagnose what may be causing it.

You can also check “Problems and Solutions” on page 38 for basic troubleshooting suggestions, or double-click the *CX4600 Reference Guide* icon on your computer desktop for more detailed help.

See these sections:

- “Error Indicators” (below)
- “Problems and Solutions” on page 38
- “Where To Get Help” on page 40



## Error Indicators

Light: status	LED message	Cause	Solution
Error: On On: Flashing	—	No paper is loaded in the sheet feeder.	Load paper in the sheet feeder. Then press <b>Start Color</b> to continue or <b>Stop</b> to cancel. See page 4.
	—	Multiple pages have been fed into the sheet feeder.	Remove and reload the paper. Then press <b>Start Color</b> to continue or <b>Stop</b> to cancel. See page 4.
Error: Flashing	—	Paper is jammed.	See page 38.
Ink: Flashing	—	An ink cartridge is running low on ink.	See “Replacing Ink Cartridges” on page 31.
Ink: On	—	An ink cartridge is empty or not installed correctly.	See “Replacing Ink Cartridges” on page 31.

Light: status	LED message	Cause	Solution
Error: Flashing Print Index Sheet, Print From Index Sheet, and Print All/DPOF: Flashing	1	A memory card is inserted that is not supported by the CX4600.	Remove the incompatible memory card. (See page 13.)
		The inserted memory card does not contain any valid images.	See page 13.
Error: Flashing Print From Index Sheet: Flashing	2	An index sheet was not recognized because it is not positioned correctly.	Position the index sheet correctly on the glass, aligning the top of it with the left edge of the glass. Then press <b>Start Color</b> to continue or <b>Stop</b> to cancel.
	3	The index sheet is marked incorrectly. (No marks are detected or the sheet includes more than one mark for an image.)	Remove the index sheet, mark it correctly, and try again. (See page 16.)
	4	The index sheet does not match the photos on the memory card.	Remove the memory card and insert the card used to print the index sheet (see page 14)—or place the correct index sheet on the glass. Then press <b>Start Color</b> to continue or <b>Stop</b> to cancel.
Error: Flashing fast	H	The paper thickness lever is set to the <input checked="" type="checkbox"/> position.	If you have set the lever to the <input checked="" type="checkbox"/> position because you are printing envelope(s), press <b>Start Color</b> to continue. Otherwise, set the lever to the <input type="checkbox"/> position.
Error: On Ink: On All other lights: Flashing	E	A part on the CX4600 needs to be replaced.	Contact your local authorized servicer or contact Epson for a referral. (See "Where To Get Help" on page 40.)
All lights: Flashing	E	There is a problem with the CX4600.	Turn the CX4600 off and then back on. If the error does not clear, contact your local authorized servicer or contact Epson for a referral. (See "Where To Get Help" on page 40.)

---

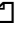
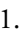
# Problems and Solutions


Check the solutions below if you're having trouble using your CX4600.

## ***Copying Problems***

- Make sure your original is positioned in the top left corner of the glass. Place it 1/10 inch from the edges to avoid cropping.
- Make sure your paper is loaded short edge first and is positioned against the right edge guide with the left edge guide against its left side. Don't load paper above the arrow mark inside the left edge guide.

## ***Paper Feeding Problems***

- If paper doesn't feed, remove it from the sheet feeder. Flip through the stack to separate the sheets a little. Then reload the paper against the right edge guide, and slide the left edge guide against the paper (but not too tightly). Make sure the paper is not in front of the feeder guard.
- Do not load too many sheets at once (up to 20 sheets of photo paper and 100 sheets of plain paper). See the *Reference Guide* for more information.
- If paper is jammed, the red  Error light flashes. Follow these steps to clear the jam:
  1. Press the  **Start Color** button to eject the jammed paper. If the jammed paper is not ejected, go on to the next step.
  2. If the paper is stuck near the sheet feeder or output tray, gently pull it out.

If the paper is stuck inside the CX4600, press the  **On** button to turn it off. Open the scanner and remove any paper inside, including any torn pieces. Do not pull it backward however; this can damage the sheet feeder. Close the scanner, then turn the CX4600 back on.

## **Print Quality Problems**

If you have any problems with the copy or print quality, try these solutions:

- Make sure the document is placed flat against the document table glass and the CX4600 is not tilted or placed on an uneven surface.
- Load the paper printable side up (usually the whiter, brighter, or glossy side).
- Make sure your paper isn't damp or curled.
- Use a support sheet with special paper or load your paper one sheet at a time. Remove sheets from the output tray so not too many collect at a time.
- Make sure the type of paper you loaded matches the paper size and paper type settings on the control panel or in your printer software (see page 25).
- For the best print quality, use Epson special media (see page 25) and genuine Epson ink cartridges (see page 31).
- Set the paper thickness lever to the  position for most paper types. If you are printing on envelopes, set the lever to the  position.
- If you notice light or dark bands across your printouts or they are too faint, you may need to clean the print head. This unclogs the nozzles so they can deliver ink properly. Run a nozzle check as described on page 29 to see if the print head needs cleaning.
- Clean the print head as described on page 30.
- If you notice jagged vertical lines, you may need to align the print head. See your *Reference Guide* for instructions.
- The ink cartridges may be old or low on ink; see page 31 for instructions on replacing an ink cartridge.
- If a dotted line appears in the image, clean the scanner glass with a soft, dry, lint-free cloth (paper towels are not recommended), or use a small amount of glass cleaner on a soft cloth, if necessary. **Don't spray glass cleaner directly on the glass.**

---

# Where To Get Help

Epson provides technical assistance 24 hours a day through the electronic support services and automated telephone services listed in the following table.

Service	Access
World Wide Web	From the Internet, you can reach Epson Support at <a href="http://support.epson.com">http://support.epson.com</a> . At this site, you can download drivers and other files, look at product documentation, access troubleshooting information, and receive technical advice through e-mail.
Automated Telephone Services	A variety of automated help services are available 24 hours a day, seven days a week. To use these services, you must have a touch tone telephone and call <b>(800) 922-8911</b> . Your Epson SoundAdvice <sup>SM</sup> Express Code is <b>70565</b> . Use this code to quickly select the Epson Stylus CX4600 in SoundAdvice.

To speak to a technical support representative, dial:

- U.S.: **(562) 276-4382**, 6 AM to 6 PM, Pacific Time, Monday through Friday
- Canada: **(905) 709-3839**, 6 AM to 6 PM, Pacific Time, Monday through Friday

Toll or long distance charges may apply. Before you call, please have the following information ready:

- Product name (Epson Stylus CX4600)
- Product serial number (located on the back)
- Proof of purchase (such as a store receipt) and date of purchase
- Computer configuration
- Description of the problem

You can purchase ink cartridges, paper, manuals, and accessories from the Epson Store at (800) 873-7766 or visit [www.epsonstore.com](http://www.epsonstore.com) (U.S. sales only). In Canada, please call (800) 463-7766 for dealer referral.

## Other Software Technical Support:

Software	Telephone/Fax	Online and E-mail
EPSON Smart Panel	(510) 445-8616 Fax: (510) 445-8601	<a href="http://www.newsoftinc.com">www.newsoftinc.com</a> <a href="mailto:contactus@newsoftinc.com">contactus@newsoftinc.com</a>
ArcSoft® PhotoImpression™	(510) 440-9901 8:30 AM—5:30 PM, Pacific Time, Monday—Friday Fax: (510) 440-1270	<a href="http://www.arcsoft.com">www.arcsoft.com</a> <a href="mailto:support@arcsoft.com">support@arcsoft.com</a>



# Notices

---

## Important Safety Instructions

Before using your CX4600, read and follow these safety instructions:

- Be sure to follow all warnings and instructions marked on the CX4600.
- Use only the type of power source indicated on the CX4600 label.
- Use only the power cord that comes with the CX4600. Use of another cord may cause fires or shock. Do not use the cord with any other equipment.
- Connect all equipment to properly grounded power outlets. Avoid using outlets on the same circuit as air control systems or other high-load devices that regularly switch on and off or are controlled by wall switches or automatic timers.
- Place the CX4600 near a wall outlet where the plug can be easily unplugged.  
*Placez l'imprimante près d'une prise de contact où la fiche peut être débranchée facilement.*
- When connecting the CX4600 to a computer or other device with a cable, ensure the correct orientation of the connectors. Each connector has only one correct orientation. Inserting a connector in the wrong orientation may damage both devices connected by the cable.
- Do not let the power cord become damaged or frayed.
- If you use an extension cord with the CX4600, make sure the total ampere rating of the devices plugged into the extension cord does not exceed the cord's ampere rating. Also, make sure the total ampere rating of all devices plugged into the wall outlet does not exceed the wall outlet's ampere rating.
- Keep your CX4600 and computer system away from potential sources of electromagnetic interference, such as loudspeakers or cordless telephone base units.
- Avoid locations that are subject to rapid changes in heat or humidity, shocks or vibrations, or dust.
- Leave enough room around the CX4600 for sufficient ventilation. Do not block or cover openings in the CX4600 case or insert objects through the slots.
- Do not place the CX4600 near a radiator or heating vent or in direct sunlight.
- Place the CX4600 on a flat, stable surface that extends beyond its base in all directions. It will not operate properly if it is tilted or at an angle.
- Do not open the scanner section while the CX4600 is copying, printing, or scanning.

- Turn off and unplug the CX4600 before cleaning. Clean with a damp cloth only. Do not spill liquid on it.
- Always turn the CX4600 off using the **⏻ On** button. Don't turn off the power using a switch on a power strip or unplug the CX4600 until the **On** light is off.
- Except as specifically explained in your documentation, do not attempt to service the CX4600 yourself.
- Unplug the CX4600 and refer servicing to qualified service personnel under the following conditions: if the power cord or plug is damaged; if liquid has entered the product; if the product has been dropped or the case damaged; if the product does not operate normally or exhibits a distinct change in performance. Adjust only those controls that are covered by the operating instructions.
- When storing or transporting the CX4600, do not tilt it, stand it on its side, or turn it upside down; otherwise ink may leak from the cartridge.
- Before transporting the CX4600, make sure the print head is capped in the far right position and the ink cartridges are in place.
- This product includes a lamp component that contains mercury (Hg). Please consult your state and local regulations regarding disposal or recycling. Do not put it in the trash.

## ***Ink Cartridge Safety Instructions***

- Keep ink cartridges out of the reach of children and do not drink the ink.
- Be careful when you handle used ink cartridges; there may be ink remaining around the ink supply port. If ink gets on your skin, wash it off with soap and water. If it gets in your eyes, flush them immediately with water.
- Leave the ink cartridges installed. Removing the cartridges can dehydrate the print head and may prevent the CX4600 from printing.
- Do not put your hand inside the CX4600 or touch any cartridges during printing.
- Do not move the print head by hand; this may damage the CX4600.
- Install the ink cartridge immediately after you remove it from its package. Leaving the cartridge unpacked for a long time before use may result in reduced print quality.
- Do not use an ink cartridge beyond the date printed on the cartridge package. For best results, use up the ink cartridges within six months of installing them.
- Store ink cartridges in a cool, dark place. Store each ink cartridge with its label facing down. Do not store cartridges upside down.
- After bringing an ink cartridge inside from a cold storage site, allow it to warm up at room temperature for at least three hours before using it.
- Do not remove or tear the label on an ink cartridge; this can cause leakage.

- Do not dismantle the ink cartridges or try to refill them. This could result in damage to the print head.
- Do not touch the green IC chip on the side of the cartridge. This may affect normal operation and printing.
- If you remove an ink cartridge for later use, protect the ink supply area from dirt and dust and store it in the same environment as the CX4600. Note that there is a valve in the ink supply port, making covers or plugs unnecessary, but care is needed to prevent the ink from staining items that the cartridge touches. Do not touch the ink cartridge ink supply port or surrounding area.

## ***Memory Card Safety Instructions***

- Do not remove the memory card or turn off the CX4600 while the computer and memory card are communicating (the memory card light or the On light is flashing).
- Use only memory cards compatible with this product.

---

## **ENERGY STAR Compliance**

As an ENERGY STAR Partner, Epson has determined that this product meets the ENERGY STAR guidelines for energy efficiency. The EPA ENERGY STAR office equipment program is a voluntary partnership with the computer and office equipment industry to promote the introduction of energy-efficient personal computers, monitors, printers, fax machines, and copiers in an effort to reduce air pollution caused by power generation.



---

## **FCC Compliance Statement**

### ***For United States Users***

This equipment has been tested and found to comply with the limits for a Class B digital device, pursuant to Part 15 of the FCC Rules. These limits are designed to provide reasonable protection against harmful interference in a residential installation. This equipment generates, uses, and can radiate radio frequency energy and, if not installed and used in accordance with the instructions, may cause harmful interference to radio or television reception. However, there is no guarantee that interference will not occur in a

particular installation. If this equipment does cause interference to radio and television reception, which can be determined by turning the equipment off and on, the user is encouraged to try to correct the interference by one or more of the following measures:

- Reorient or relocate the receiving antenna.
- Increase the separation between the equipment and receiver.
- Connect the equipment into an outlet on a circuit different from that to which the receiver is connected.
- Consult the dealer or an experienced radio/TV technician for help.

## **WARNING**

The connection of a non-shielded equipment interface cable to this equipment will invalidate the FCC Certification of this device and may cause interference levels which exceed the limits established by the FCC for this equipment. It is the responsibility of the user to obtain and use a shielded equipment interface cable with this device. If this equipment has more than one interface connector, do not leave cables connected to unused interfaces. Changes or modifications not expressly approved by the manufacturer could void the user's authority to operate the equipment.

## **For Canadian Users**

This Class B digital apparatus complies with Canadian ICES-003.

*Cet appareil numérique de la classe B est conforme à la norme NMB-003 du Canada.*

---

# **Declaration of Conformity**

According to 47CFR, Part 2 and 15 for: Class B Personal Computers and Peripherals; and/or CPU Boards and Power Supplies used with Class B Personal Computers:

We: Epson America, Inc.  
Located at: MS 3-13  
3840 Kilroy Airport Way  
Long Beach, CA 90806  
Telephone: (562) 290-5254

Declare under sole responsibility that the product identified herein, complies with 47CFR Part 2 and 15 of the FCC rules as a Class B digital device. Each product marketed is identical to the representative unit tested and found to be compliant with the standards. Records maintained continue to reflect the equipment being produced can be expected to

be within the variation accepted, due to quantity production and testing on a statistical basis as required by 47CFR §2.909. Operation is subject to the following two conditions: (1) this device may not cause harmful interference, and (2) this device must accept any interference received, including interference that may cause undesired operation.

Trade Name: Epson  
Type of Product: Multifunction printer  
Model: C181A

---

## Epson America, Inc., Limited Warranty

**What Is Covered:** Epson America, Inc. (“Epson”) warrants to the original retail purchaser that the Epson printer covered by this limited warranty statement, if purchased and operated only in the United States or Canada, conforms to the manufacturer’s specifications and will be free from defects in workmanship and materials for a period of one (1) year from the date of original purchase. Epson also warrants that the consumable ink cartridges enclosed with the printer will perform to the manufacturer’s specified usage, which usage may expire before the expiration of the limited warranty for the Epson printer. For warranty service, you must provide proof of the date of original purchase.

**What Epson Will Do To Correct Problems:** Should your Epson printer prove defective during the warranty period, please call the Epson Connection<sup>SM</sup> at (562) 276-4382 (U.S.) or (905) 709-3839 (Canada) for warranty repair instructions and return authorization. An Epson service technician will provide telephone diagnostic service to determine whether the printer requires service. If service is needed, Epson will, at its option, exchange or repair the printer without charge for parts or labor. If Epson authorizes an exchange for the defective unit, Epson will ship a replacement printer to you, freight prepaid, so long as you use an address in Canada or the U.S. (excluding Puerto Rico and U.S. Possessions). Shipments to other locations will be made freight collect. You are responsible for securely packaging the defective unit and returning it to Epson within five (5) working days of receipt of the replacement. Epson requires a debit or a credit card number to secure the cost of the replacement printer in the event that you fail to return the defective one. If your printer is being repaired, Epson will direct you to send your printer to Epson or its authorized service center, where the printer will be fixed and sent back to you. You are responsible for packing the printer and for all costs to and from the Epson authorized service center. When warranty service involves the exchange of the printer or a part, the item replaced becomes Epson property. The replacement printer or part may be new or refurbished to the Epson standard of quality, and, at Epson’s option, may be another model of like kind and quality. Epson’s liability for replacement of the covered printer will not exceed the original retail selling price of the covered printer. Exchange products and parts assume the remaining warranty period of your original product covered by this limited warranty.

**What This Warranty Does Not Cover:** This warranty does not apply to refurbished or reconditioned products. This warranty covers only normal use in the United States and Canada. This warranty is not transferable. This warranty does not cover any color change or fading of prints or reimbursement of materials or services required for reprinting. This warranty does not cover damage to the Epson product caused by parts or supplies not manufactured, distributed or certified by Epson. This warranty does not cover ribbons, ink cartridges or third party parts, components, or peripheral devices added to the Epson product after its shipment from Epson, e.g., dealer or user-added boards or components. Epson is not responsible for warranty service should the Epson label or logo or the rating label or serial number be removed or should the product fail to be properly maintained or fail to function properly as a result of misuse, abuse, improper installation, neglect, improper shipping, damage caused by disasters such as fire, flood, and lightning, improper electrical current, software problems, interaction with non-Epson products, or service other than by an Epson Authorized Servicer. If a claimed defect cannot be identified or reproduced, you will be held responsible for the costs incurred.

THE WARRANTY AND REMEDY PROVIDED ABOVE ARE EXCLUSIVE AND IN LIEU OF ALL OTHER EXPRESS OR IMPLIED WARRANTIES INCLUDING, BUT NOT LIMITED TO, THE IMPLIED WARRANTIES OF MERCHANTABILITY, NON-INFRINGEMENT OR FITNESS FOR A PARTICULAR PURPOSE. SOME LAWS DO NOT ALLOW THE EXCLUSION OF IMPLIED WARRANTIES. IF THESE LAWS APPLY, THEN ALL EXPRESS AND IMPLIED WARRANTIES ARE LIMITED TO THE WARRANTY PERIOD IDENTIFIED ABOVE. UNLESS STATED HEREIN, ANY STATEMENT OR REPRESENTATIONS MADE BY ANY OTHER PERSON OR FIRM ARE VOID. EXCEPT AS PROVIDED IN THIS WRITTEN WARRANTY, NEITHER EPSON AMERICA, INC., NOR ITS AFFILIATES SHALL BE LIABLE FOR ANY LOSS, INCONVENIENCE, OR DAMAGE, INCLUDING DIRECT, SPECIAL, INCIDENTAL OR CONSEQUENTIAL DAMAGES, RESULTING FROM THE USE OR INABILITY TO USE THE EPSON PRODUCT, WHETHER RESULTING FROM BREACH OF WARRANTY OR ANY OTHER LEGAL THEORY.

In Canada, warranties include both warranties and conditions.

Some jurisdictions do not allow limitations on how long an implied warranty lasts, and some jurisdictions do not allow the exclusion or limitation of incidental or consequential damages, so the above limitations and exclusions may not apply to you. This warranty gives you specific legal rights and you may have other rights which vary from jurisdiction to jurisdiction.

Epson America, Inc. ■ P. O. Box 93012 ■ Long Beach, CA 90809-3012

---

# Copyright Notice

All rights reserved. No part of this publication may be reproduced, stored in a retrieval system, or transmitted in any form or by any means, electronic, mechanical, photocopying, recording, or otherwise, without the prior written permission of Seiko Epson Corporation. The information contained herein is designed only for use with this Epson product. Epson is not responsible for any use of this information as applied to other equipment.

Neither Seiko Epson Corporation nor its affiliates shall be liable to the purchaser of this product or third parties for damages, losses, costs, or expenses incurred by purchaser or third parties as a result of: accident, misuse, or abuse of this product or unauthorized modifications, repairs, or alterations to this product, or (excluding the U.S.) failure to strictly comply with Seiko Epson Corporation's operating and maintenance instructions.

Seiko Epson Corporation shall not be liable for any damages or problems arising from the use of any options or any consumable products other than those designated as Original Epson Products or Epson Approved Products by Seiko Epson Corporation.

## Responsible Use of Copyrighted Materials

Digital cameras, scanners, and ink jet printers, like conventional photocopiers and cameras, can be misused by improper copying or printing of copyrighted material. While some countries' laws permit limited copying of copyrighted material in certain circumstances, those circumstances may not be as broad as some people assume. Epson encourages each user to be responsible and respectful of the copyright laws when using digital cameras, scanners, and ink jet printers.

## Trademarks

Epson and Epson Stylus are registered trademarks and EPSON Smart Panel is a trademark of Seiko Epson Corporation.

DURABrite is a registered trademark and Epson Connection, Epson Store, and SoundAdvice are service marks of Epson America, Inc.

General Notice: Other product names used herein are for identification purposes only and may be trademarks of their respective owners. Epson disclaims any and all rights in those marks.

