

SAMSUNG CLOUD PRINT PC AGENT & DRIVER

User Guide

SAMSUNG

Copyright

© 2014 Samsung Electronics Co., Ltd. All rights reserved.

This manual is provided for informational purposes. All information contained in this document is subject to change without notice.

Samsung Electronics is not responsible for any direct/indirect damages arising due or relating to the use of the user's manual.

Unless required by applicable law or agreed to in writing, software distributed under the License is distributed "as is" basis without warranties or condition of any kind, either express or implied. See the License for the specific language governing permissions and limitations under the License.

- Samsung and Samsung logo are trademarks of Samsung Electronics Co., Ltd.
- Microsoft, Windows XP, Windows Vista, Windows 7, Windows 8, Windows Server 2008 R2, Windows 10 and Windows Server 2016 are either registered trademarks or trademarks of Microsoft Corporation.
- iPad, iPhone, iPod touch, Mac and Mac OS are trademarks of Apple Inc. registered in U.S and other countries.
- Other brands and their products are trademarks or registered trademarks of their respective holders.

REV. 4.00

CONTENTS



1. Installing and Uninstalling Samsung Cloud Print

Installing Samsung Cloud Print	8
Uninstalling Samsung Cloud Print	15



2. Getting Started

Introduction to Samsung Cloud Print (Windows/Mac)	17
Requirements	18



3. Registering Printers and Printing

Registering Printers	20
Sending and Printing Documents	26


User's Manual Information


This manual describes how to use the product. It provides instructions on installing and uninstalling on Microsoft Windows or Mac computers to use the **Samsung Cloud Print** service. It also explains how to use the installed **Samsung Cloud Print**.

The screenshots shown in this User's Manual can be different from the actual screens depending on the version of firmware/driver.

Syntax

The syntax conventions used in this manual are listed in the table below.

Syntax	Description	Example
Bold	Bold type is used on displayed characters or on the name of control panel buttons.	Start > Programs
Reference	Provides additional information and detailed specifications for the product's functions and features.	 You cannot log on without a registration number.

Syntax	Description	Example
Precaution	Provides information to prevent mechanical damages or malfunctions of the product.	 If Samsung Cloud Print Agent or Scan to Samsung Cloud is installed, you must delete the app to install the Samsung Cloud Agent. Otherwise, your system may not work properly.
("See")	Directs you to the reference page for additional information.	(See "Registering Printers" on page 20)

Additional Information

You can find the necessary information from the following sources.

Item	Meaning
Target Users	This manual is intended for network users and administrators who have knowledge of the following items for printing. <ul style="list-style-type: none">• Scanning using Samsung products• Network Protocol-Proxy, DNS• Samsung Cloud Services

User's Manual Information

Item	Meaning
Product Support Information	Please contact Samsung Printer Services. http://www.samsungprinter.com
Compatible Devices	Please visit the website below. https://www.samsungcloudprint.com/

Terminology

Terminology	Meaning
SCP	Is the abbreviation of Samsung Cloud Print .
USB	The USB (Universal Serial Bus) memory device offers a wide range of memory capacities as well as additional space to store or carry documents, presentations, music and video files, high-resolution photos, and others.

System Requirements



For information on future OS releases and customer support, visit the Samsung website.

Microsoft® Windows®



Internet Explorer 8 or higher and .NET Framework 3.5 or higher must be installed.

Operating System	Requirements (Recommended)		
	CPU	RAM	Free Hard Disk Space
Windows® XP Service Pack 3	Intel® Pentium® III 933 MHz (Pentium IV 1 GHz)	128 MB (256 MB)	1.5 GB
Windows Server® 2003 SP2 or higher	Intel® Pentium® III 933 MHz (Pentium IV 1 GHz)	128 MB (512 MB)	1.25 GB - 2 GB
Windows Server® 2008	Intel® Pentium® IV 1 GHz (Pentium IV 2 GHz)	512 MB (2 GB)	10 GB
Windows Vista®	Intel® Pentium® IV 3 GHz	512 MB (1 GB)	15 GB

User's Manual Information

Operating System	Requirements (Recommended)		
	CPU	RAM	Free Hard Disk Space
Windows® 7	Intel® Pentium® IV 1 GHz 32-bit or 64-bit processor or higher	1 GB (2 GB)	16 GB
	<ul style="list-style-type: none"> • 128 MB DirectX® 9 graphics support (when using the Aero theme) • DVD-R/W drive 		
Windows Server® 2008 R2	Intel® Pentium® IV 1.4 GHz (x64) processor (2 GHz or higher)	512 MB (2 GB)	10 GB
Windows® 8 Windows® 8.1 Windows® 10 Windows Server® 2016	Intel® Pentium® IV 1 GHz 32-bit or 64-bit processor or higher	2 GB (2 GB)	20 GB
	<ul style="list-style-type: none"> • 128 MB DirectX® 9 graphics support (when using the Aero theme) • DVD-R/W drive 		
Windows Server® 2012 Windows Server® 2012 R2	Intel® Pentium® IV 1.4 GHz (x64) processor (2 GHz or higher)	512 MB (2 GB)	32 GB

Mac

Operating System	Requirements (Recommended)		
	CPU	RAM	Free Hard Disk Space
Mac OS X 10.7 - 10.11	• Intel® processor	2 GB	4 GB



1. Installing and Uninstalling Samsung Cloud Print

This section contains information on the installing and uninstalling of the **Samsung Cloud Print** (Windows) PC App. Run the environment check before you begin the installation.

The contents of this section are as follows.

- **Installing Samsung Cloud Print** 8
- **Uninstalling Samsung Cloud Print** 15

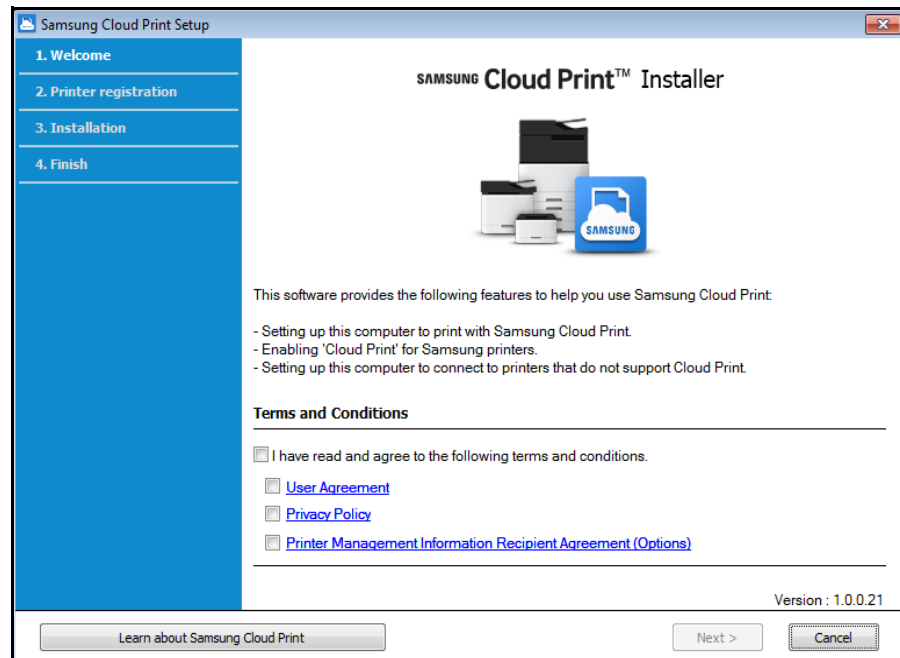


- Run the environment check.
- To use the PC App, you need to install the Mobile App and register the phone number you use to the **Samsung Cloud** Services.
- Download the **Samsung Cloud Print** PC App installation program from the Samsung website (<https://www.samsungcloudprint.com/>).
- The installation screens can be different from the actual screens depending on the version of firmware/driver.
- You can register up to five printers. (The number of printers that can be registered may change depending on the service policy.)

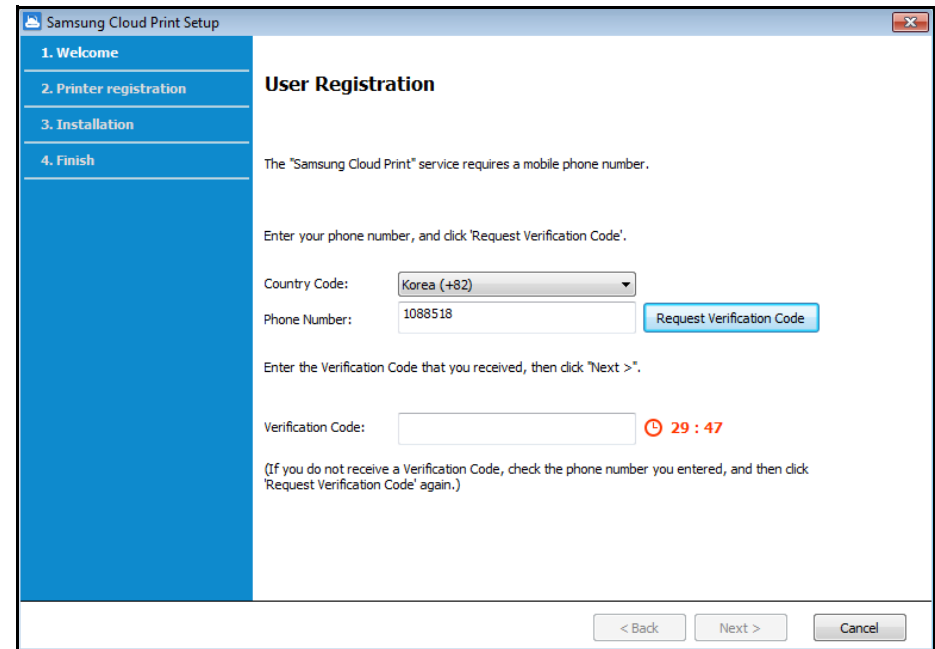
Installing Samsung Cloud Print

Windows

- 1 Download the **Samsung Cloud Print** PC App from the Samsung website (<https://www.samsungcloudprint.com/>).
- 2 Run the downloaded **Samsung Cloud Print** PC App. Agree to the terms and conditions of the service and select the **Next** button.

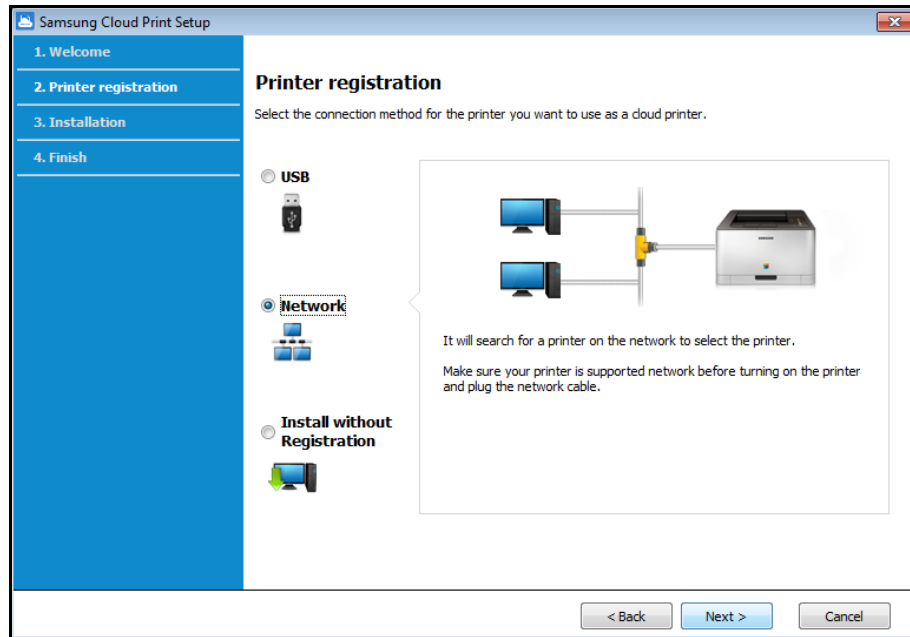


- 3 Enter the phone number you have installed the **Samsung Cloud Print** Mobile App with, and click on the **Request Verification Code** button.
Next, enter the received verification number and select the **Next** button.



Installing Samsung Cloud Print

- 4 Select the connection method of the printer to register to the **Samsung Cloud** service and select the **Next** button.



- **USB:** Search for the printer connected to USB.
- **Network:** Search for the printer connected to a network.



Select **Network** and press the **Next** button. If you cannot find the printer from the search results, check if the printer is on or the computer is connected to the network. Then press **Search Again** to search again.

- **Install without Registration:** If you want to use the printing service using **Samsung Cloud** without registering a printer, select this item.

- 5 Depending on the environment for **Samsung Cloud Print**, the screens below may appear differently. Select the **Next** button on this screen.



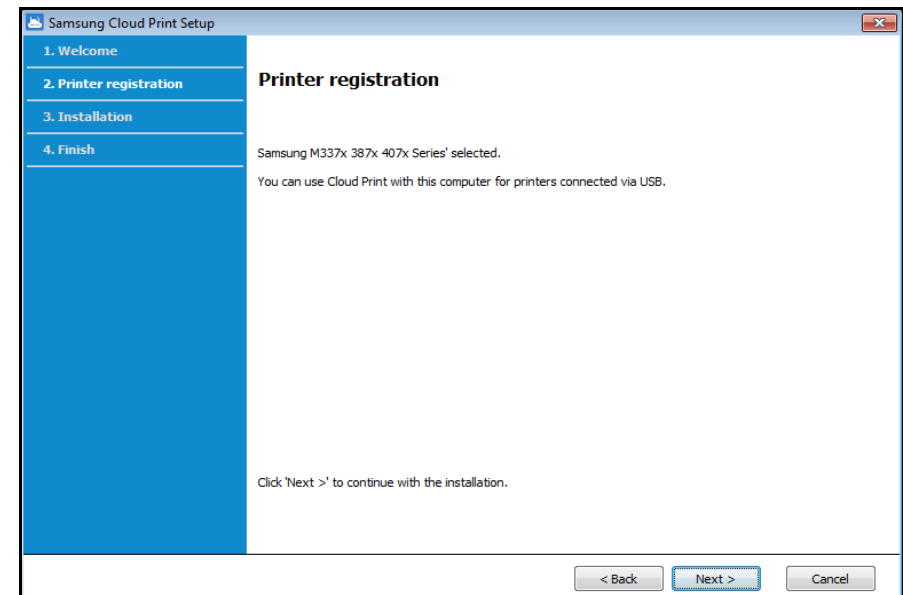
The model name displayed on the screen can be different depending on the connected printer.

- **If the printer is connected to USB**

If you want to register the printer after installing the **Samsung Cloud Print** App on a PC, select the **Next** button.



The PC to be installed with the App must be on in order to use the **Samsung Cloud Print** service.



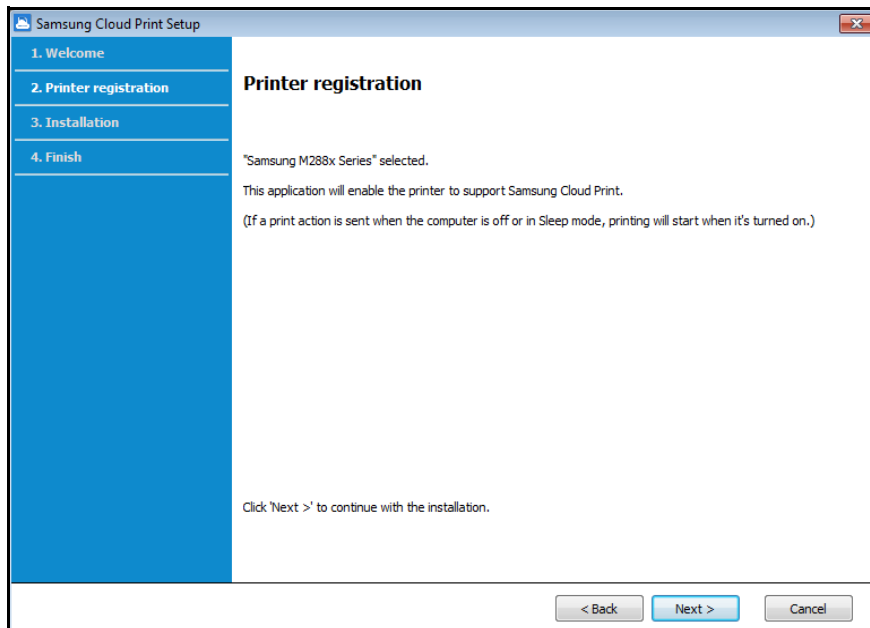
Installing Samsung Cloud Print

- If the printer does not support **Samsung Cloud Print**

If **Network** has been selected as the printer connection method, and you want to register the printer after installing the **Samsung Cloud Print App** on a PC, select the **Next** button.

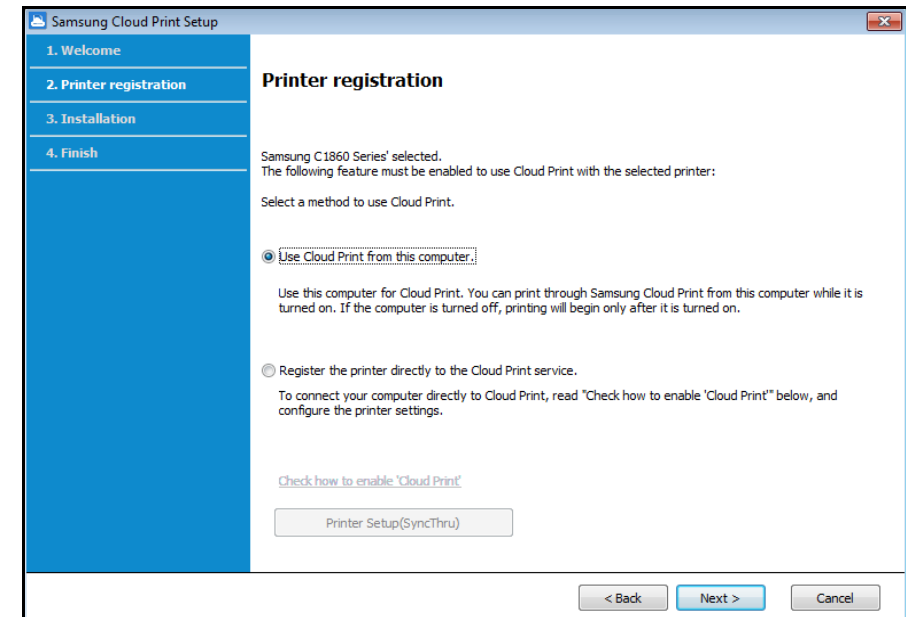


The PC to be installed with the App must be on in order to use the **Samsung Cloud Print** service.



- **If the screen below appears**

If **Network** has been selected as the printer connection method, you can set the **Samsung Cloud Print** function of the selected printer directly to use the **Samsung Cloud Print** service function. Select the item you want and select the **Next** button.

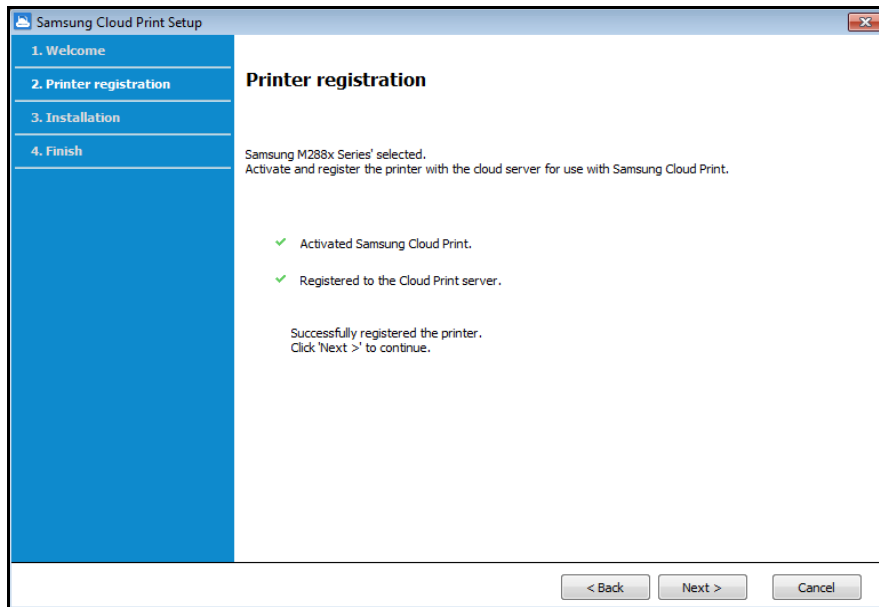


- **Check how to enable Cloud Print:** It shows how to set the **Samsung Cloud Print** function of the connected printer directly.
- **Use Cloud Print from this computer:** Register the printer after installing the **Samsung Cloud Print App** on the current computer. In this case, the power of the PC to be installed with the App must be on in order to use the **Samsung Cloud Print** service.

Installing Samsung Cloud Print

- **If the screen below appears**

Network has been selected as the printer connection method, and the network printer that supports **Samsung Cloud Print** has been selected. The **Samsung Cloud Print** function of the printer is enabled automatically. When the printer registration window appears, press the **Next** button.



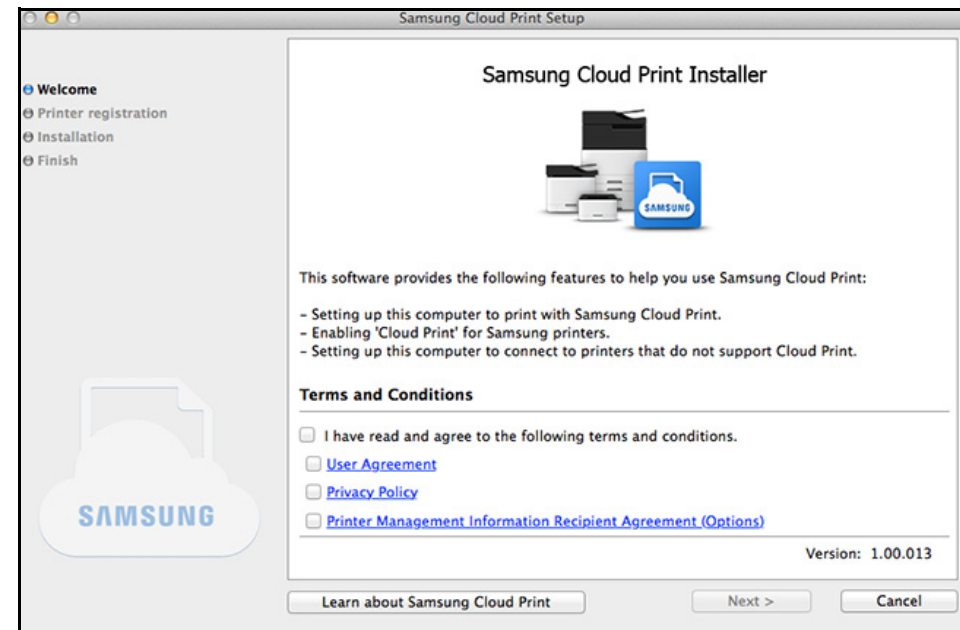
6 Now install the **Samsung Cloud Print** Mobile App and the software printer driver.

7 When the installation is complete, select the **OK** button to exit the installation program.

Mac

1 Download the **Samsung Cloud Print** PC App from the Samsung website (<https://www.samsungcloudprint.com/>).

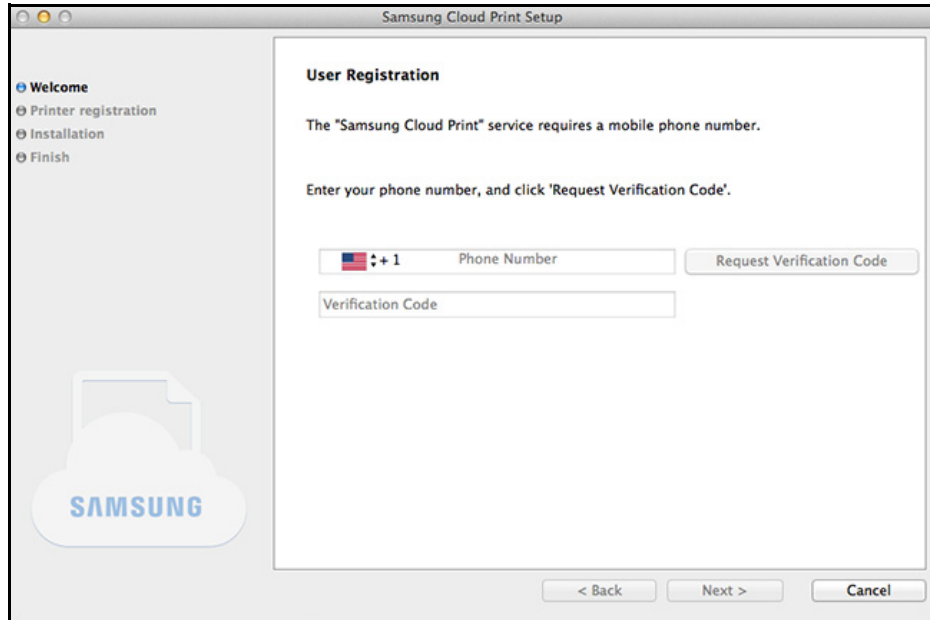
2 Run the downloaded **Samsung Cloud Print** PC App. Agree to the terms and conditions of the service and select the **Next** button.



Installing Samsung Cloud Print

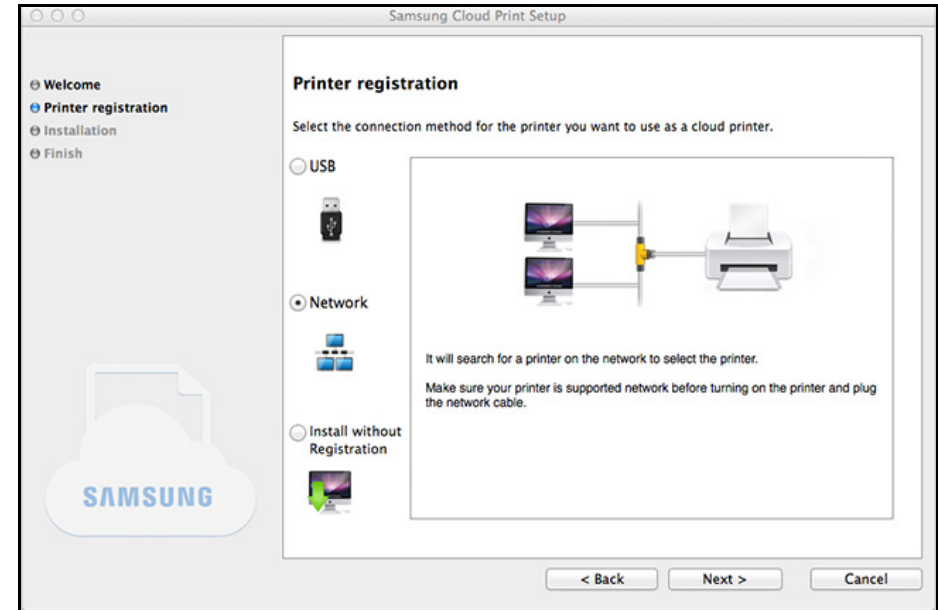
- 3 Enter the phone number you have installed the **Samsung Cloud Print** Mobile App with, and click on the **Request Verification Code** button.

Next, enter the received verification number and select the **Next** button.



The screenshot shows the 'User Registration' step of the Samsung Cloud Print Setup. The window title is 'Samsung Cloud Print Setup'. On the left, there is a sidebar with navigation options: 'Welcome', 'Printer registration' (selected), 'Installation', and 'Finish'. Below the sidebar is a large Samsung logo. The main content area contains the following text: 'User Registration', 'The "Samsung Cloud Print" service requires a mobile phone number.', and 'Enter your phone number, and click "Request Verification Code".'. There are two input fields: 'Phone Number' (with a dropdown for country code '+1') and 'Verification Code'. A 'Request Verification Code' button is located to the right of the phone number field. At the bottom, there are '< Back', 'Next >', and 'Cancel' buttons.

- 4 Select the connection method of the printer to register to the **Samsung Cloud** service and select the **Next** button.



The screenshot shows the 'Printer registration' step of the Samsung Cloud Print Setup. The window title is 'Samsung Cloud Print Setup'. On the left, there is a sidebar with navigation options: 'Welcome', 'Printer registration' (selected), 'Installation', and 'Finish'. Below the sidebar is a large Samsung logo. The main content area contains the following text: 'Printer registration', 'Select the connection method for the printer you want to use as a cloud printer.', and three radio button options: 'USB', 'Network' (selected), and 'Install without Registration'. The 'Network' option is accompanied by a diagram showing a printer connected to a network of computers. Below the diagram, it says: 'It will search for a printer on the network to select the printer. Make sure your printer is supported network before turning on the printer and plug the network cable.'. At the bottom, there are '< Back', 'Next >', and 'Cancel' buttons.

- **USB:** Search for the printer connected to USB.
- **Network:** Search for the printer connected to a network.




Select **Network** and press the **Next** button. If you cannot find the printer from the search results, check if the printer is on or the computer is connected to the network. Then press **Search Again** to search again.

- **Install without Registration:** If you want to use the printing service using **Samsung Cloud** without registering a printer, select this item.


Installing Samsung Cloud Print

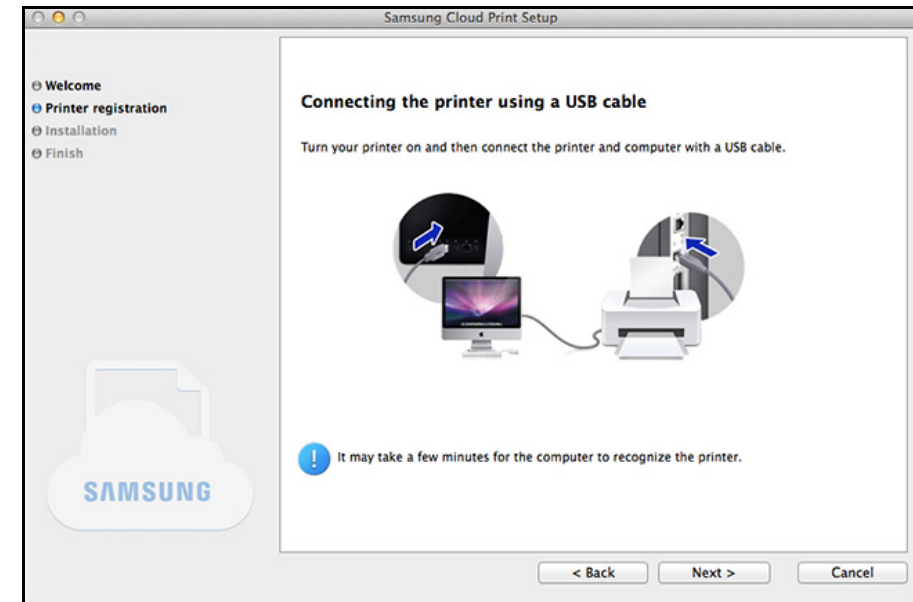
- 5 Enter the password and click **OK**.
- 6 Depending on the environment for **Samsung Cloud Print**, the screens below may appear differently. Select the **Next** button on this screen.

 The model name displayed on the screen can be different depending on the connected printer.

- **If the printer is connected to USB**

If you want to register the printer after installing the **Samsung Cloud Print** App on a PC, select the **Next** button.

 The PC to be installed with the App must be on in order to use the **Samsung Cloud Print** service.



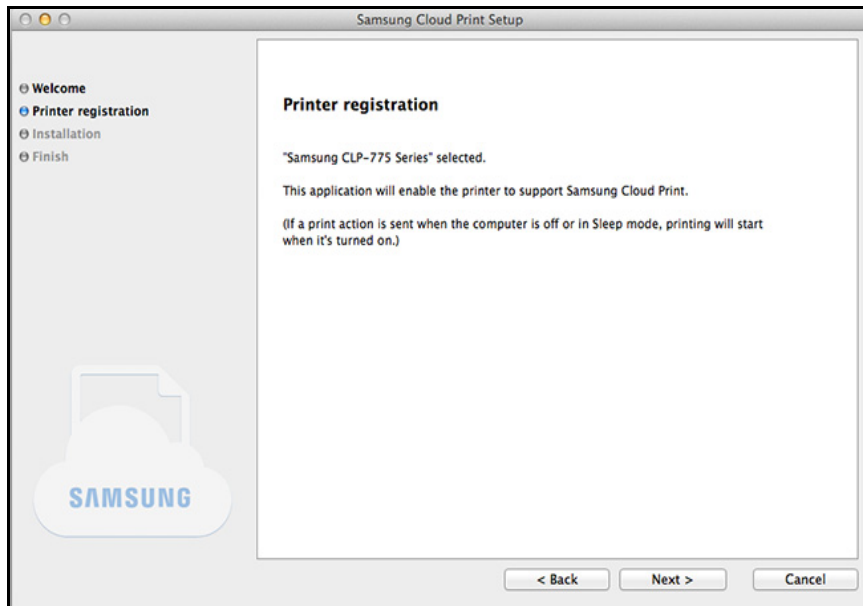
Installing Samsung Cloud Print

- **If the screen below appears**

If **Network** has been selected as the printer connection method, and you want to register the printer after installing the **Samsung Cloud Print** App on a PC, select the **Next** button.

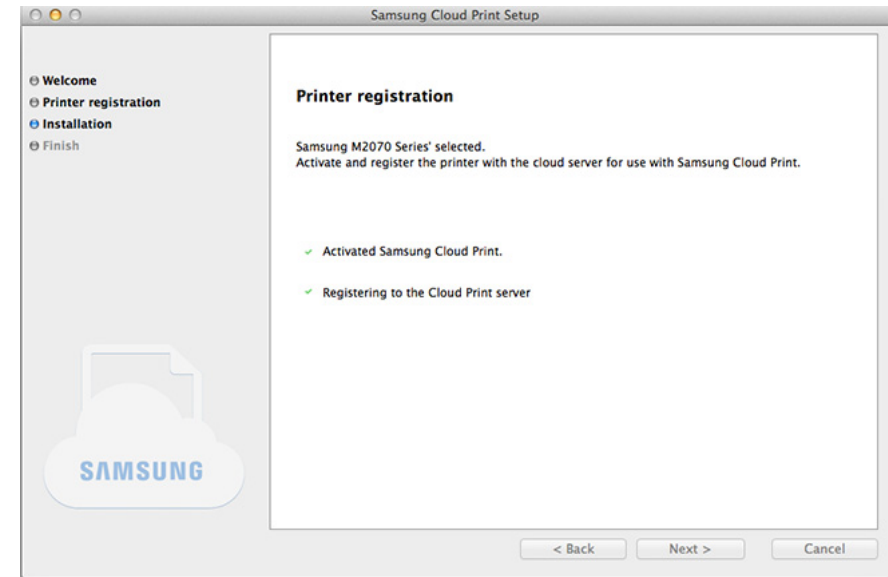


The PC to be installed with the App must be on in order to use the **Samsung Cloud Print** service.



- **If the screen below appears**

The network printer that supports **Samsung Cloud Print** is selected. The **Samsung Cloud Print** function of the printer is enabled automatically. When the printer registration window appears, press the **Next** button.



7 Now install the **Samsung Cloud Print** Mobile App and the software printer driver.

8 When the installation is complete, select the **OK** button to exit the installation program.

Uninstalling Samsung Cloud Print

Windows

- 1 Select **All Programs > Uninstall Samsung Printer Software** from the **Start** menu.
- 2 When the **Uninstall Samsung Printer Software** program is running, read the details on the screen and select the **Next** button to proceed with the removal process.
- 3 Select **Samsung Cloud Print** and press the **Finish** button to remove the software.

Mac

- 1 Click **Applications** folder > **Samsung** > **Printer Software Uninstaller**.
- 2 When the program for removing the Samsung printer software appears, read the details and click **Continue**.
- 3 Select **Samsung Cloud Print** and press the **Remove** button to remove the software.

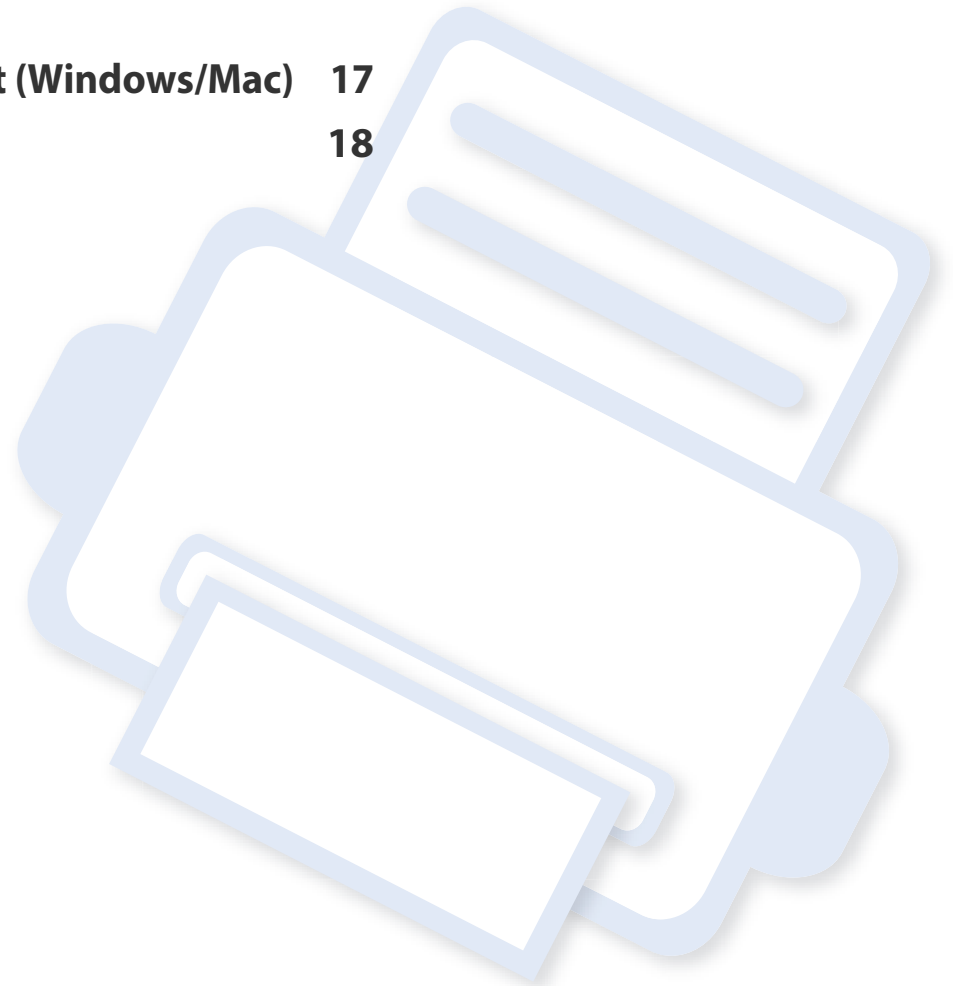


2. Getting Started

This section contains information on how to use Samsung Cloud Print.

The contents of this section are as follows.

- **Introduction to Samsung Cloud Print (Windows/Mac)** 17
- **Requirements** 18



Introduction to Samsung Cloud Print (Windows/Mac)

The **Samsung Cloud Print** (Windows/Mac) program is the solution to print from a computer using **Samsung Cloud** services.

You can send documents to the users registered with **Samsung Cloud**, or you can print documents from printers connected to **Samsung Cloud**. In particular, the printer set on your computer, which is installed with the **Samsung Cloud Print** (Windows/Mac) program, can be registered in **Samsung Cloud** and be used for printing via the **Samsung Cloud Print** mobile app.

If the product connected to a network or USB is registered with the program, it can also be used for printing in mobile apps.

Requirements

- The computer installed with **Samsung Cloud Print** must be connected to the Internet in order to access the **Samsung Cloud Print** service.
- The printer to be registered to **Samsung Cloud** must be properly connected via USB or network ports to the computer installed with **Samsung Cloud Print**, and the power of the printer must be on.
- The printer using the USB port only cannot be registered with **Samsung Cloud Print** mobile app.
In this case, please register via **Samsung Cloud Print** program installed on your computer.
- The **Samsung Cloud Print** program requires the phone number registered with **Samsung Cloud** via the **Samsung Cloud Print** mobile app in order to register your printer. You cannot register your printer without a registered phone number.
- Limited number of printers can be registered with the **Samsung Cloud Print**, so you will not be able to add more once you reach the maximum number allowed.
When you are unable to register printers through **Samsung Cloud Print** program due to this maximum limit, delete your printers registered with the **Samsung Cloud Print** mobile app and try again.
- Some printers are not supported by **Samsung Cloud Print** program. You can check the supported printers at <https://www.samsungcloudprint.com/>.



3. Registering Printers and Printing

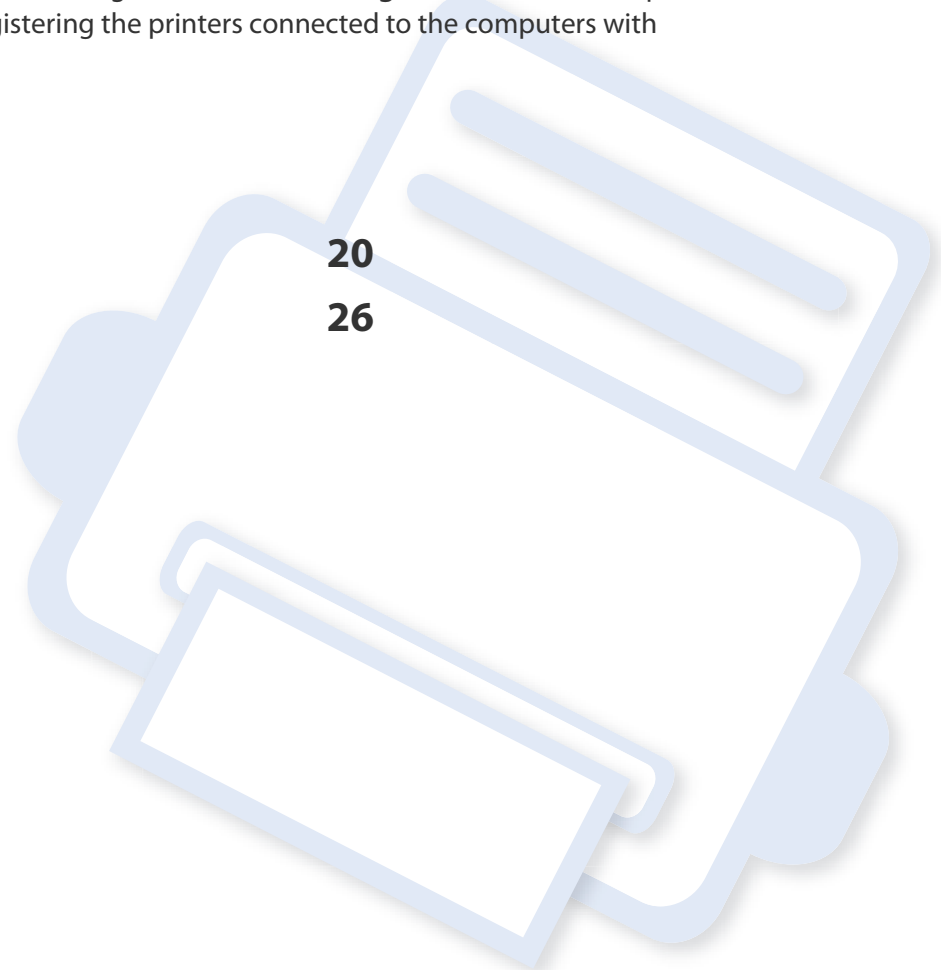
This section describes sending documents to the users or printers registered with **Samsung Cloud** from the computers installed with the **Samsung Cloud Print** program, and registering the printers connected to the computers with **Samsung Cloud**.

The contents of this section are as follows.

- **Registering Printers**
- **Sending and Printing Documents**

20

26



Registering Printers

You can register the printers registered on PC. You can check the registered printers on the Mobile App.



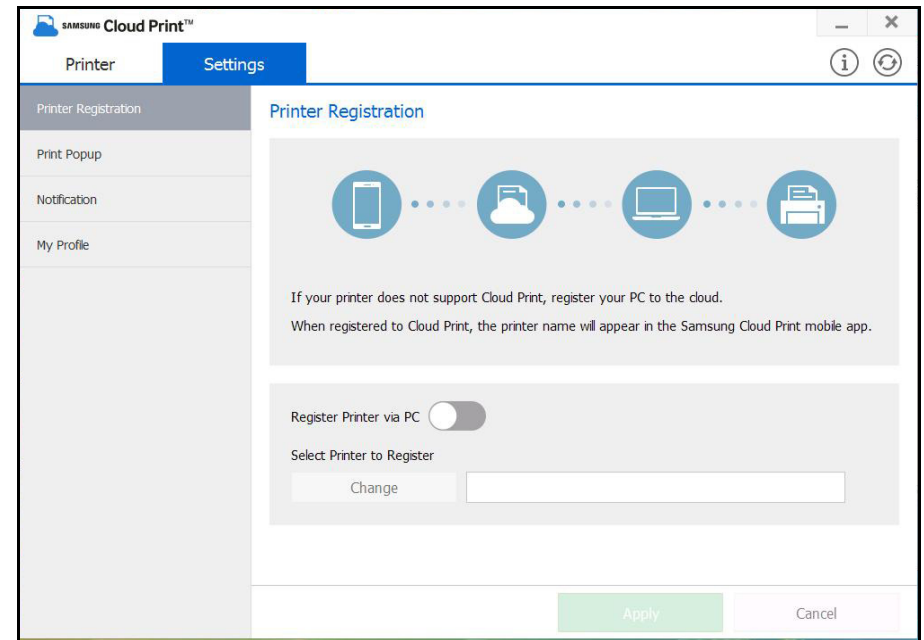
The screens can be different from the actual screens depending on the version of firmware/driver.

Windows

Registering Printers

- 1 Run the program by selecting **All Programs > Samsung Printers > Samsung Cloud Print** from the **Start menu**.
- 2 You can select the printer to register to **Samsung Cloud** and change user information in **Settings > Printer Registration**.

If you want to change printers, press the **Change** button to search for a new printer. Select a printer and press the **Apply** button to change printers. If you turn off **Register Printer via PC**, it is not displayed on the Mobile App.

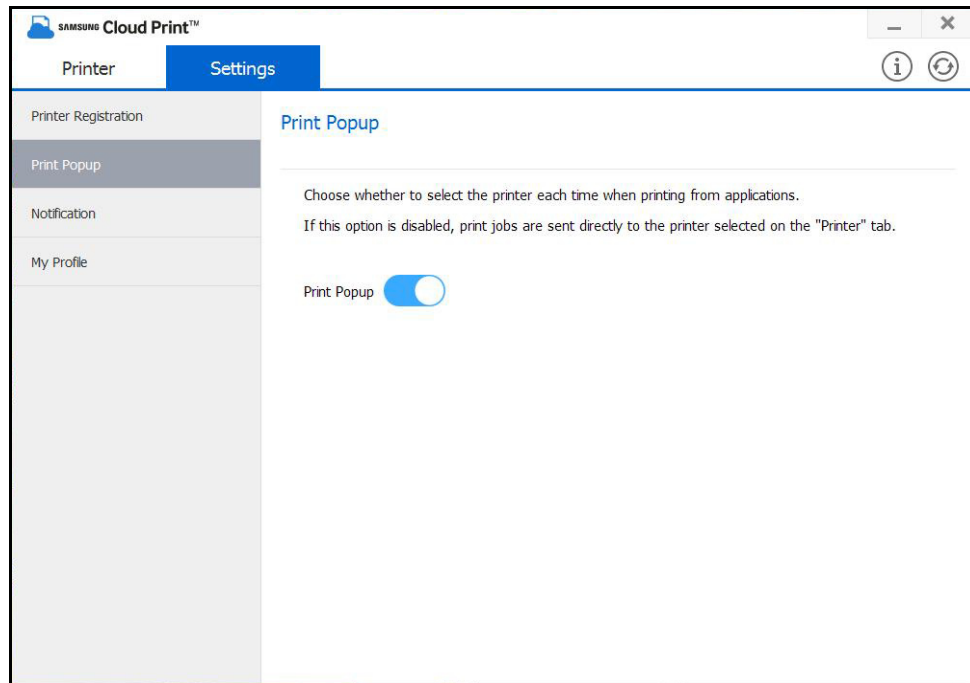


The phone number to register the printer with must be entered in **My Profile**.

Registering Printers

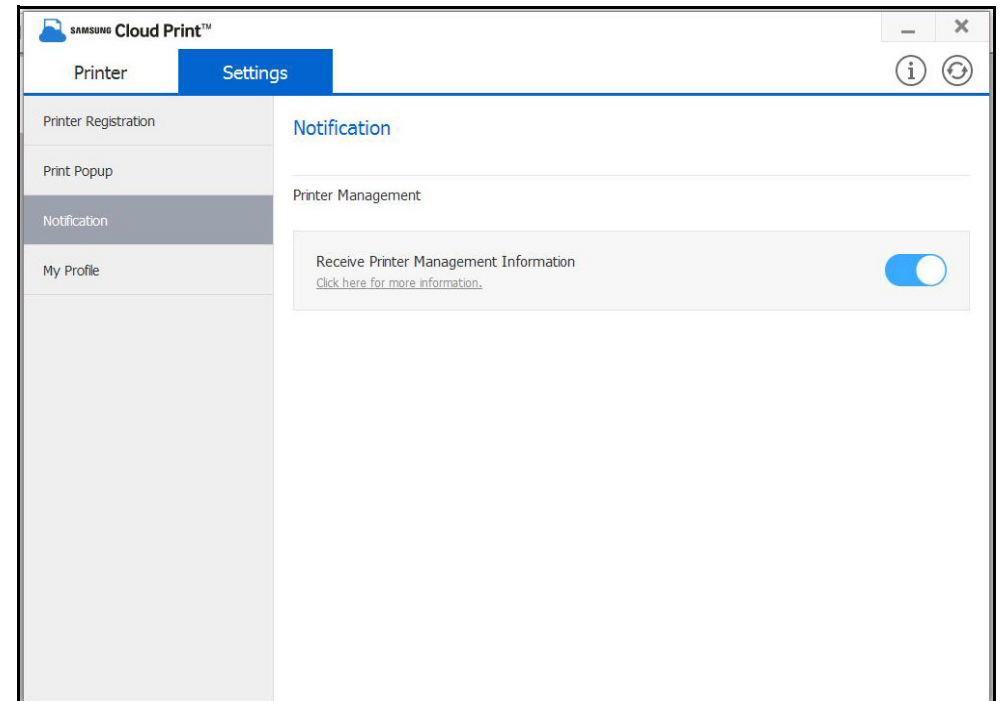
Printing Popup

You can select the **Print Popup** option. If **Print Popup** is turned off, the popup window for selecting documents and sending them to My Drive, a printer, or a friend does not appear. Instead, you can print documents directly in the application.



Notification

You can select the Notification option. If the Notification option is enabled, you can receive printer management information such as toner information to the phone number you registered.

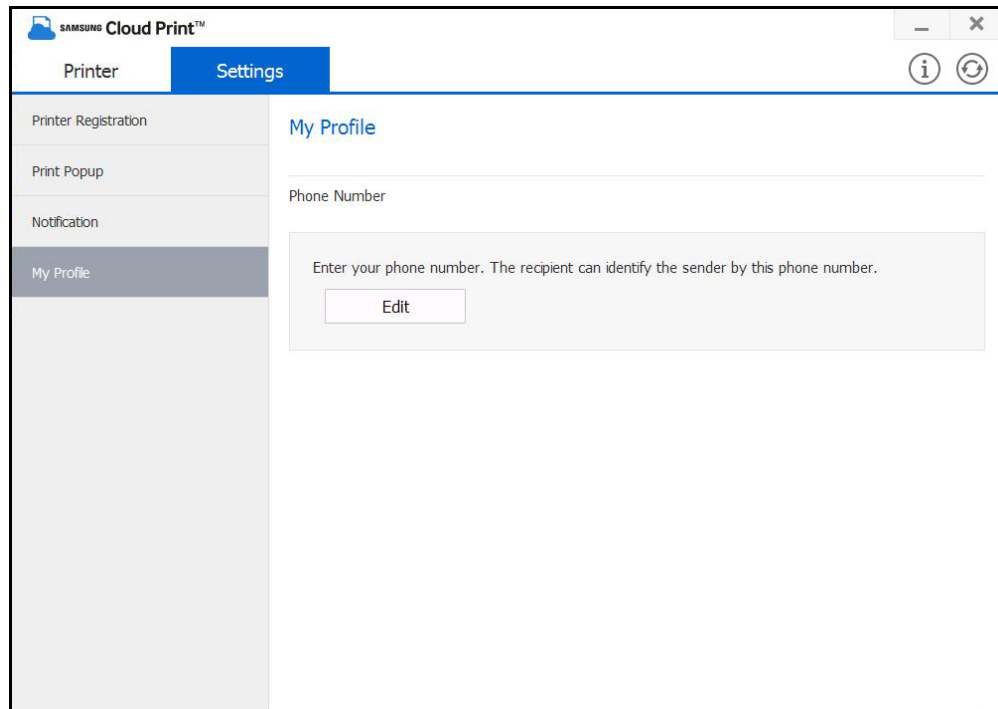


Registering Printers

My Profile

You can change the registered telephone number in **My Profile**.

If you change the phone number, the printer registered to the previous phone number will be deleted and the printer registered to the new phone number will be displayed on the PC.



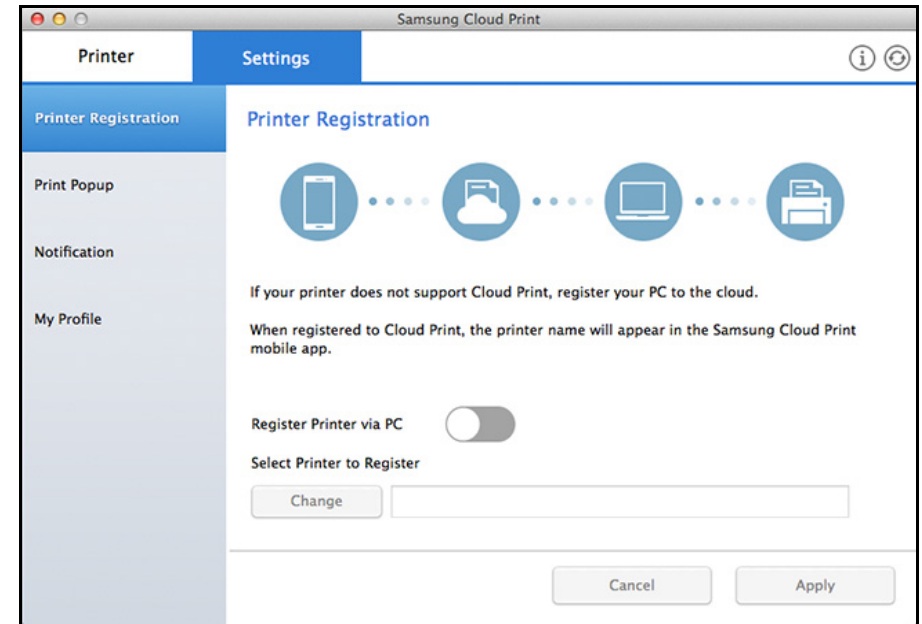
Registering Printers

Mac

Registering Printers

- 1 Run the program by selecting **All Programs > Samsung Printers > Samsung Cloud Print** from the **Start** menu.
- 2 You can select the printer to register to **Samsung Cloud** and change user information in **Settings > Printer Registration**.

If you want to change printers, press the **Change** button to search for a new printer. Select a printer and press the **Apply** button to change printers. If you turn off **Register Printer via PC**, it is not displayed on the Mobile App.

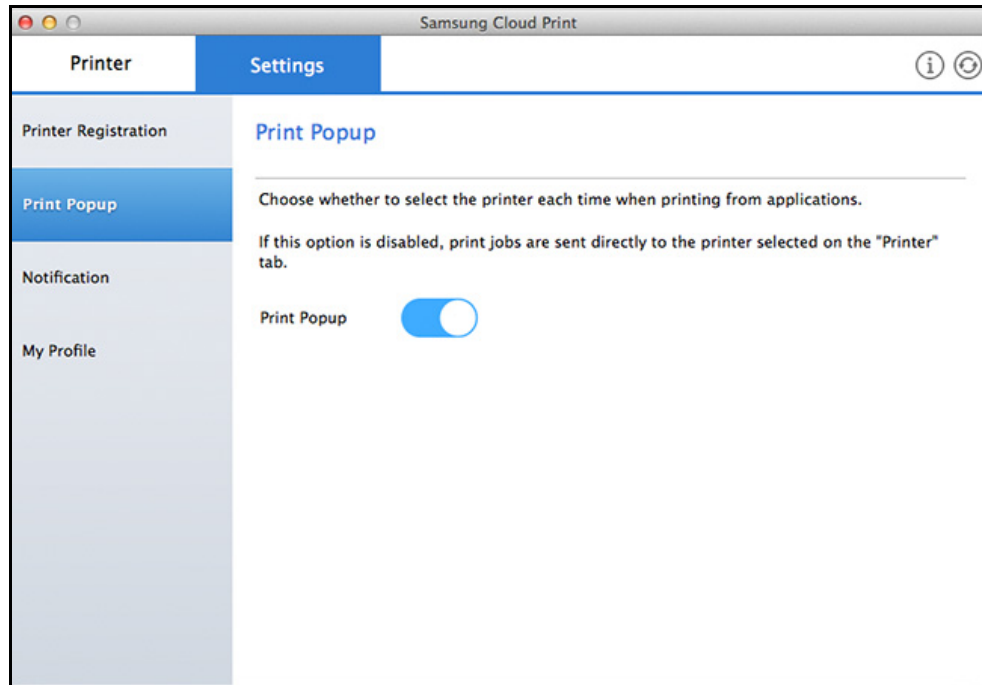


The phone number to register the printer with must be entered in **My Profile**.

Registering Printers

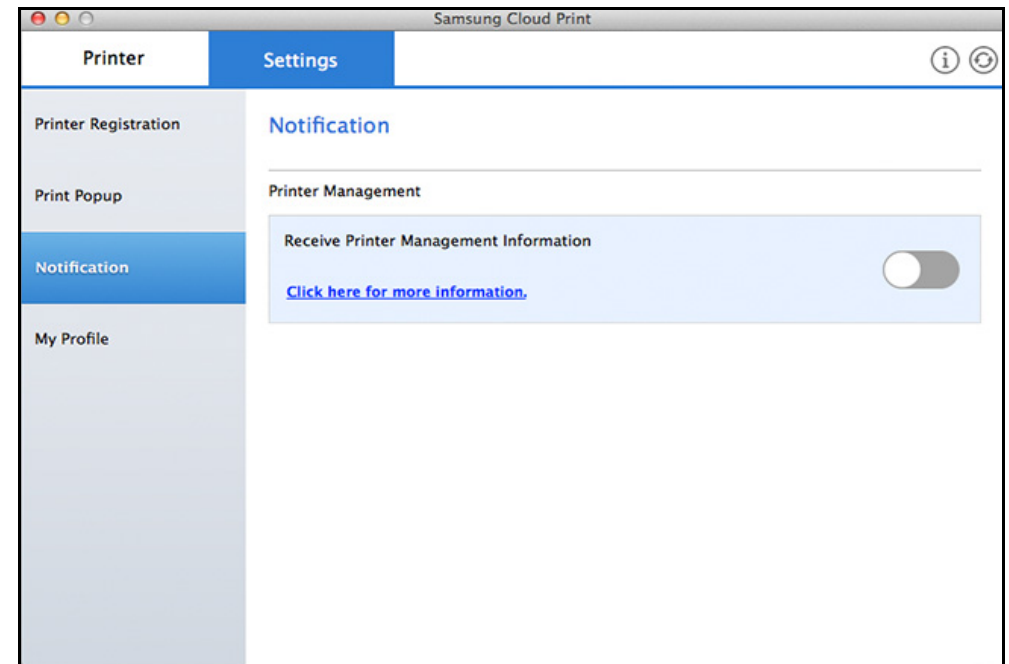
Printing Popup

You can select the **Print Popup** option. If **Print Popup** is turned off, the popup window for selecting documents and sending them to My Drive, a printer, or a friend does not appear. Instead, you can print documents directly in the application.



Notification

You can select the **Notification** option. If the Notification option is enabled, you can receive printer management information such as toner information to the phone number you registered. The Notification bar displays the status of the product.

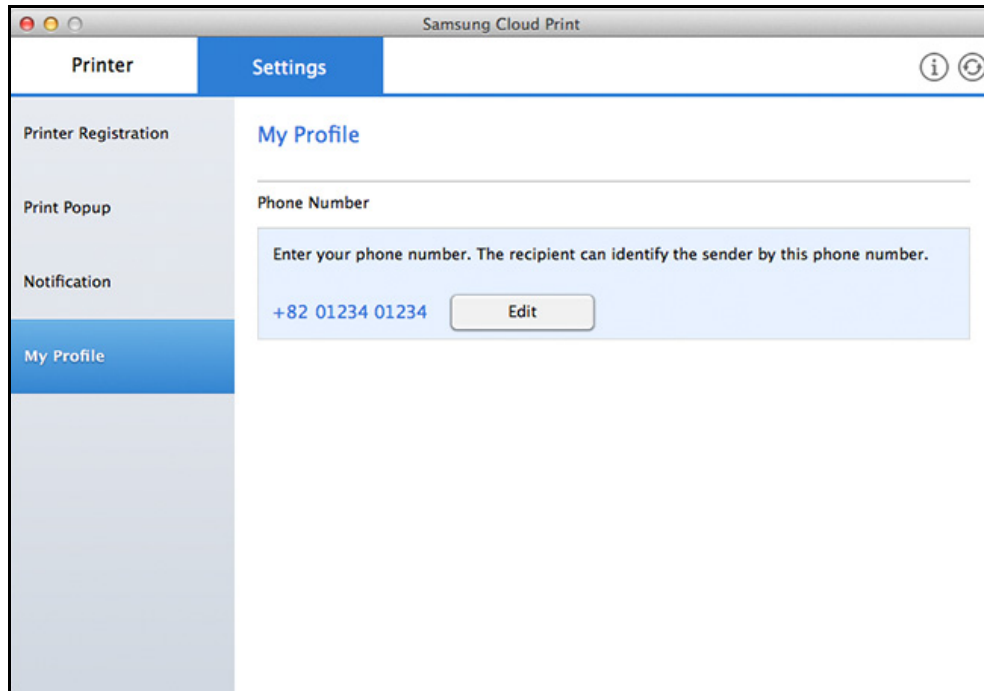


Registering Printers

My Profile

You can change the registered telephone number in **My Profile**.

If you change the phone number, the printer registered to the previous phone number will be deleted and the printer registered to the new phone number will be displayed on the PC.



Sending and Printing Documents

This section provides instructions on how to send documents from the application program to the users (phone numbers) registered with **Samsung Cloud** via **Samsung Cloud Print**, and how to print using the printers.



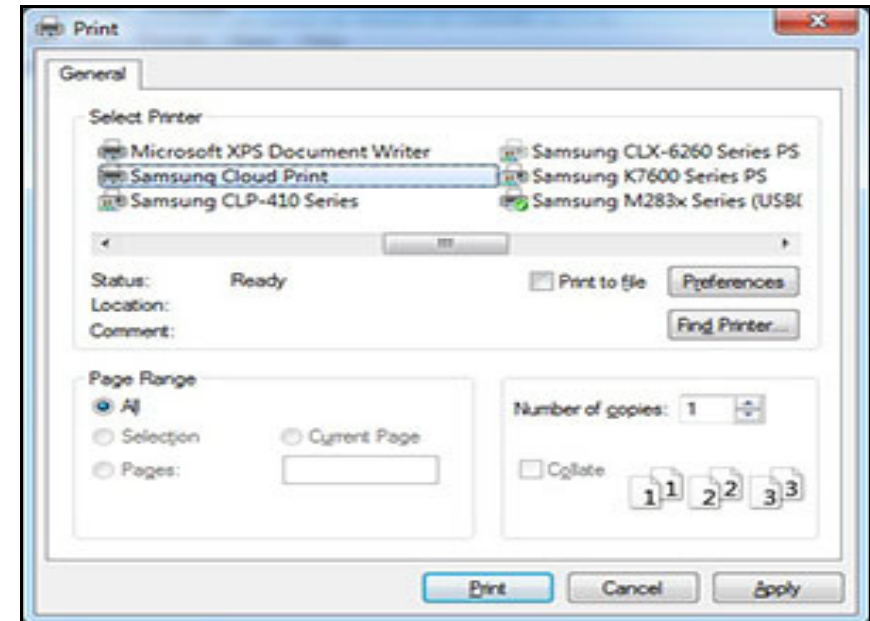
- The screens can be different from the actual screens depending on the version of firmware/driver.
- Print jobs will be sent by creating the source documents into print data. At this time, the generated print data may be larger than the original documents. If the print data exceed the maximum transferable, the data cannot be sent.

Windows

Send the print jobs created in a printable application such as Microsoft Word to the users registered with **Samsung Cloud**.

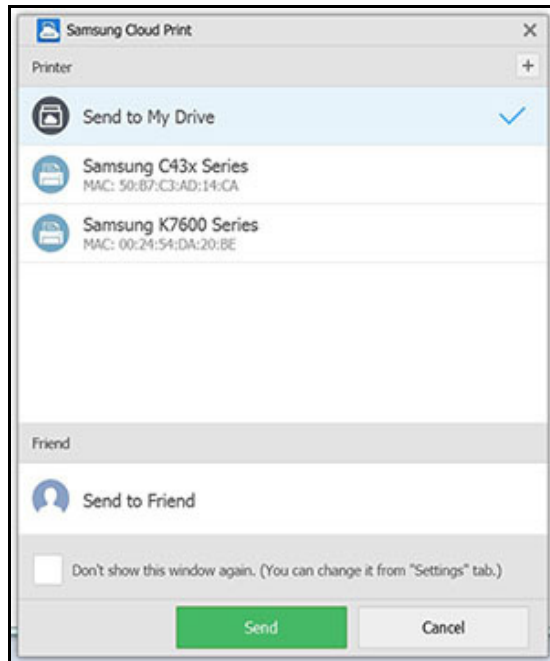
- 1 Reducing the number of pages to be sent can reduce the size of the print data.
- 2 Select **Print** from the **File** menu.

- 3 Select **Samsung Cloud Print** from the printer list, and select the **Print** button to run the **Samsung Cloud Print**.



Sending and Printing Documents

- 4 Click the **Send** button to send documents to My Cloud, printer or friends. The following shows the list to which you can send documents.



- **Send to My Drive:** Send to your own **Cloud**.
- **Printer:** Send to the printers registered on the Mobile App or PC. If your friends have shared their printers on the Mobile App, you can send to your friends' printers.
- **Friend:** Send the document using user's phone number registered to **Samsung Cloud**.



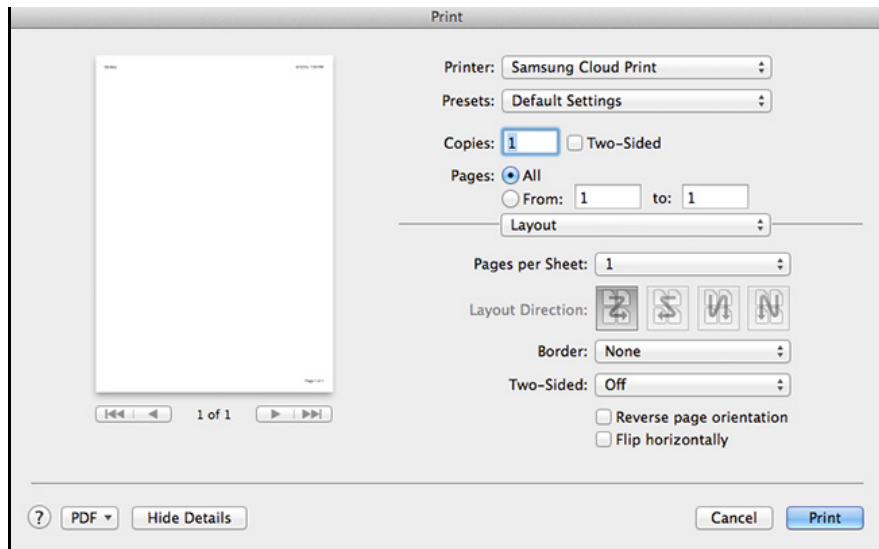
- In order to send the document, the entered phone number must be registered with **Samsung Cloud**.
- To modify or delete the registered printer information, right-click the printer.

Mac

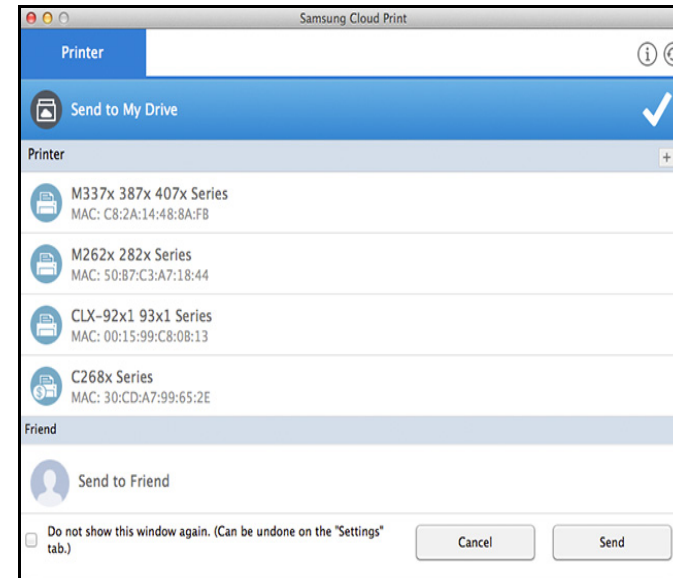
- 1 Reducing the number of pages to be sent can reduce the size of the print data.
- 2 Select **Print** from the **File** menu.
- 3 Select **Samsung Cloud Agent** from the printer list.

Sending and Printing Documents

- 4 Select the paper size, direction, and other options and click **Print**.



- 5 Click the **Send** button to send documents to My Cloud, printer or friends. The following shows the list to which you can send documents.



- **Send to My Drive:** Send to your own **Cloud**.
- **Printer:** Send to the printers registered on the Mobile App or PC. If your friends have shared their printers on the Mobile App, you can send to your friends' printers.
- **Friend:** Send the document using user's phone number registered to **Samsung Cloud**.



- In order to send the document, the entered phone number must be registered with **Samsung Cloud**.
- To edit or delete a registered printer, select the printer and right click.

Open Source Information

Open Source Information

Apache License, Version 2.0

Apache License

Version 2.0, January 2004

<http://www.apache.org/licenses/>

TERMS AND CONDITIONS FOR USE, REPRODUCTION, AND DISTRIBUTION

1. Definitions

"License" shall mean the terms and conditions for use, reproduction, and distribution as defined by Sections 1 through 9 of this document.

"Licensor" shall mean the copyright owner or entity authorized by the copyright owner that is granting the License.

"Legal Entity" shall mean the union of the acting entity and all other entities that control, are controlled by, or are under common control with that entity. For the purposes of this definition, "control" means (i) the power, direct or indirect, to cause the direction or management of such entity, whether by contract or otherwise, or (ii) ownership of fifty percent (50%) or more of the outstanding shares, or (iii) beneficial ownership of such entity.

"You" (or "Your") shall mean an individual or Legal Entity exercising permissions granted by this License.

"Source" form shall mean the preferred form for making modifications, including but not limited to software source code, documentation source, and configuration files.

"Object" form shall mean any form resulting from mechanical transformation or translation of a Source form, including but not limited to compiled object code, generated documentation, and conversions to other media types.

"Work" shall mean the work of authorship, whether in Source or Object form, made available under the License, as indicated by a copyright notice that is included in or attached to the work (an example is provided in the Appendix below).

"Derivative Works" shall mean any work, whether in Source or Object form, that is based on (or derived from) the Work and for which the editorial revisions, annotations, elaborations, or other modifications represent, as a whole, an original work of authorship. For the purposes of this License, Derivative Works shall not include works that remain separable from, or merely link (or bind by name) to the interfaces of, the Work and Derivative Works thereof.

"Contribution" shall mean any work of authorship, including the original version of the Work and any modifications or additions to that Work or Derivative Works thereof, that is intentionally submitted to Licensor for inclusion in the Work by the copyright owner or by an individual or Legal Entity authorized to submit on behalf of the copyright owner. For the purposes of this definition,

"submitted" means any form of electronic, verbal, or written communication sent to the Licensor or its representatives, including but not limited to communication on electronic mailing lists, source code control systems, and issue tracking systems that are managed by, or on behalf of, the Licensor for the purpose of discussing and improving the Work, but excluding communication that is conspicuously marked or otherwise designated in writing by the copyright owner as "Not a Contribution."

"Contributor" shall mean Licensor and any individual or Legal Entity on behalf of whom a Contribution has been received by Licensor and subsequently incorporated within the Work.

Grant of Copyright License.

Subject to the terms and conditions of this License, each Contributor hereby grants to You a perpetual, worldwide, on-exclusive, no-charge, royalty-free, irrevocable copyright license to reproduce, prepare Derivative Works of, publicly display, publicly perform, sublicense, and distribute the Work and such Derivative Works in Source or Object form.

Grant of Patent License.

Subject to the terms and conditions of this License, each Contributor hereby grants to You a perpetual, worldwide, on-exclusive, no-charge, royalty-free, irrevocable (except as stated in this section) patent license to make, have made, use, offer to sell, sell, import, and otherwise transfer the Work, where such license applies only to those patent claims licensable by such Contributor that are necessarily infringed by their Contribution(s) alone or by combination of their Contribution(s) with the Work to which such Contribution(s) was submitted. If You institute patent litigation against any entity (including a cross-claim or counterclaim in a lawsuit) alleging that the Work or a Contribution incorporated within the Work constitutes direct or contributory patent infringement, then any patent licenses granted to You under this License for that Work shall terminate as of the date such litigation is filed.

Redistribution.

You may reproduce and distribute copies of the Work or Derivative Works thereof in any medium, with or without modifications, and in Source or Object form, provided that You meet the following conditions:

- a. You must give any other recipients of the Work or Derivative Works a copy of this License; and
- b. You must cause any modified files to carry prominent notices stating that You changed the files; and
- c. You must retain, in the Source form of any Derivative Works that You distribute, all copyright, patent, trademark, and attribution notices from the Source form of the Work, excluding those notices that do not pertain to any part of the Derivative Works; and
- d. If the Work includes a "NOTICE" text file as part of its distribution, then any Derivative Works that You distribute must include a readable copy of the attribution notices contained within such NOTICE file, excluding those notices that do not pertain to any part of the Derivative Works, in at least one of the following places: within a NOTICE text file distributed as part of the Derivative Works; within the Source form or documentation, if provided along with the Derivative Works; or, within a display generated by the Derivative Works, if and wherever such third-party notices

Open Source Information

normally appear. The contents of the NOTICE file are for informational purposes only and do not modify the License. You may add Your own attribution notices within Derivative Works that You distribute, alongside or as an addendum to the NOTICE text from the Work, provided that such additional attribution notices cannot be construed as modifying the License. You may add Your own copyright statement to Your modifications and may provide additional or different license terms and conditions for use, reproduction, or distribution of Your modifications, or for any such Derivative Works as a whole, provided Your use, reproduction, and distribution of the Work otherwise complies with the conditions stated in this License.

5. Submission of Contributions. Unless You explicitly state otherwise, any Contribution intentionally submitted for inclusion in the Work by You to the Licensor shall be under the terms and conditions of this License, without any additional terms or conditions. Notwithstanding the above, nothing herein shall supersede or modify the terms of any separate license agreement you may have executed with Licensor regarding such Contributions.
6. Trademarks. This License does not grant permission to use the trade names, trademarks, service marks, or product names of the Licensor, except as required for reasonable and customary use in describing the origin of the Work and reproducing the content of the NOTICE file.
7. Disclaimer of Warranty. Unless required by applicable law or agreed to in writing, Licensor provides the Work (and each Contributor provides its Contributions) on an "AS IS" BASIS, WITHOUT WARRANTIES OR CONDITIONS OF ANY KIND, either express or implied, including, without limitation, any warranties or conditions of TITLE, NON-INFRINGEMENT, MERCHANTABILITY, or FITNESS FOR A PARTICULAR PURPOSE. You are solely responsible for determining the appropriateness of using or redistributing the Work and assume any risks associated with Your exercise of permissions under this License.
8. Limitation of Liability. In no event and under no legal theory, whether in tort (including negligence), contract, or otherwise, unless required by applicable law (such as deliberate and grossly negligent acts) or agreed to in writing, shall any Contributor be liable to You for damages, including any direct, indirect, special, incidental, or consequential damages of any character arising as a result of this License or out of the use or inability to use the Work (including but not limited to damages for loss of goodwill, work stoppage, computer failure or malfunction, or any and all other commercial damages or losses), even if such Contributor has been advised of the possibility of such damages.
9. Accepting Warranty or Additional Liability. While redistributing the Work or Derivative Works thereof, You may choose to offer, and charge a fee for, acceptance of support, warranty, indemnity, or other liability obligations and/or rights consistent with this License. However, in accepting such obligations, You may act only on Your own behalf and on Your sole responsibility, not on behalf of any other Contributor, and only if You agree to indemnify, defend, and hold each Contributor harmless for any liability incurred by, or claims asserted against, such Contributor by reason of your accepting any such

LICENSE ISSUES

=====

The OpenSSL toolkit stays under a dual license, i.e. both the conditions of the OpenSSL License and the original SSLeay license apply to the toolkit. See below for the actual license texts. Actually both licenses are BSD-style Open Source licenses. In case of any license issues related to OpenSSL please contact openssl-core@openssl.org.

OpenSSL License

```
/* =====
 * Copyright (c) 1998-2011 The OpenSSL Project. All rights reserved.
 *
 * Redistribution and use in source and binary forms, with or without
 * modification, are permitted provided that the following conditions
 * are met:
 *
 * 1. Redistributions of source code must retain the above copyright
 * notice, this list of conditions and the following disclaimer.
 *
 * 2. Redistributions in binary form must reproduce the above copyright
 * notice, this list of conditions and the following disclaimer in
 * the documentation and/or other materials provided with the
 * distribution.
 *
 * 3. All advertising materials mentioning features or use of this
 * software must display the following acknowledgment:
 * "This product includes software developed by the OpenSSL Project
 * for use in the OpenSSL Toolkit. (http://www.openssl.org/)"
 *
 * 4. The names "OpenSSL Toolkit" and "OpenSSL Project" must not be used to
 * endorse or promote products derived from this software without
 * prior written permission. For written permission, please contact
 * openssl-core@openssl.org.
 *
 * 5. Products derived from this software may not be called "OpenSSL"
 * nor may "OpenSSL" appear in their names without prior written
 * permission of the OpenSSL Project.
 *
 * 6. Redistributions of any form whatsoever must retain the following
 * acknowledgment:
 * "This product includes software developed by the OpenSSL Project
 * for use in the OpenSSL Toolkit (http://www.openssl.org/)"
 *
 * THIS SOFTWARE IS PROVIDED BY THE OpenSSL PROJECT ``AS IS'' AND ANY
 * EXPRESSED OR IMPLIED WARRANTIES, INCLUDING, BUT NOT LIMITED TO, THE
 * IMPLIED WARRANTIES OF MERCHANTABILITY AND FITNESS FOR A PARTICULAR
 * PURPOSE ARE DISCLAIMED. IN NO EVENT SHALL THE OpenSSL PROJECT OR
 * ITS CONTRIBUTORS BE LIABLE FOR ANY DIRECT, INDIRECT, INCIDENTAL,
 * SPECIAL, EXEMPLARY, OR CONSEQUENTIAL DAMAGES (INCLUDING, BUT
 * NOT LIMITED TO, PROCUREMENT OF SUBSTITUTE GOODS OR SERVICES;
 * LOSS OF USE, DATA, OR PROFITS; OR BUSINESS INTERRUPTION)
 * HOWEVER CAUSED AND ON ANY THEORY OF LIABILITY, WHETHER IN CONTRACT,
 * STRICT LIABILITY, OR TORT (INCLUDING NEGLIGENCE OR OTHERWISE)
 * ARISING IN ANY WAY OUT OF THE USE OF THIS SOFTWARE, EVEN IF ADVISED
 * OF THE POSSIBILITY OF SUCH DAMAGE.
 * =====
```

Open Source Information

```
* This product includes cryptographic software written by Eric Young
* (eay@cryptsoft.com). This product includes software written by Tim
* Hudson (tjh@cryptsoft.com).
*
*/
Original SSLeay License
-----
/* Copyright (C) 1995-1998 Eric Young (eay@cryptsoft.com)
* All rights reserved.
*
* This package is an SSL implementation written
* by Eric Young (eay@cryptsoft.com).
* The implementation was written so as to conform with Netscapes SSL.
*
* This library is free for commercial and non-commercial use as long as
* the following conditions are aheared to. The following conditions
* apply to all code found in this distribution, be it the RC4, RSA,
* lhash, DES, etc., code; not just the SSL code. The SSL documentation
* included with this distribution is covered by the same copyright terms
* except that the holder is Tim Hudson (tjh@cryptsoft.com).
*
* Copyright remains Eric Young's, and as such any Copyright notices in
* the code are not to be removed.
* If this package is used in a product, Eric Young should be given attribution
* as the author of the parts of the library used.
* This can be in the form of a textual message at program startup or
* in documentation (online or textual) provided with the package.
*
* Redistribution and use in source and binary forms, with or without
* modification, are permitted provided that the following conditions
* are met:
* 1. Redistributions of source code must retain the copyright
* notice, this list of conditions and the following disclaimer.
* 2. Redistributions in binary form must reproduce the above copyright
* notice, this list of conditions and the following disclaimer in the
* documentation and/or other materials provided with the distribution.
* 3. All advertising materials mentioning features or use of this software
* must display the following acknowledgement:
* "This product includes cryptographic software written by
* Eric Young (eay@cryptsoft.com)"
* The word 'cryptographic' can be left out if the rouines from the library
* being used are not cryptographic related :-).
* 4. If you include any Windows specific code (or a derivative thereof) from
* the apps directory (application code) you must include an acknowledgement:
* "This product includes software written by Tim Hudson (tjh@cryptsoft.com)"
*
* THIS SOFTWARE IS PROVIDED BY ERIC YOUNG ``AS IS'' AND
* ANY EXPRESS OR IMPLIED WARRANTIES, INCLUDING, BUT NOT LIMITED TO, THE
* IMPLIED WARRANTIES OF MERCHANTABILITY AND FITNESS FOR A PARTICULAR PURPOSE
* ARE DISCLAIMED. IN NO EVENT SHALL THE AUTHOR OR CONTRIBUTORS BE LIABLE
* FOR ANY DIRECT, INDIRECT, INCIDENTAL, SPECIAL, EXEMPLARY, OR CONSEQUENTIAL
* DAMAGES (INCLUDING, BUT NOT LIMITED TO, PROCUREMENT OF SUBSTITUTE GOODS
* OR SERVICES; LOSS OF USE, DATA, OR PROFITS; OR BUSINESS INTERRUPTION)
* HOWEVER CAUSED AND ON ANY THEORY OF LIABILITY, WHETHER IN CONTRACT, STRICT
* LIABILITY, OR TORT (INCLUDING NEGLIGENCE OR OTHERWISE) ARISING IN ANY WAY
* OUT OF THE USE OF THIS SOFTWARE, EVEN IF ADVISED OF THE POSSIBILITY OF
* SUCH DAMAGE.
*
* The licence and distribution terms for any publically available version or
* derivative of this code cannot be changed. i.e. this code cannot simply be
* copied and put under another distribution licence
* [including the GNU Public Licence.]
*/
```

pugixml parser - version 1.2

Copyright (C) 2006-2012, by Arseny Kapoulkine (arseny.kapoulkine@gmail.com)
Report bugs and download new versions at <http://pugixml.org/>

This library is distributed under the MIT License. See notice at the end
of this file.

This work is based on the pugxml parser, which is:
Copyright (C) 2003, by Kristen Wegner (kristen@tima.net)

Copyright (c) 2006-2012 Arseny Kapoulkine

Permission is hereby granted, free of charge, to any person
obtaining a copy of this software and associated documentation
files (the "Software"), to deal in the Software without
restriction, including without limitation the rights to use,
copy, modify, merge, publish, distribute, sublicense, and/or sell
copies of the Software, and to permit persons to whom the
Software is furnished to do so, subject to the following
conditions:

The above copyright notice and this permission notice shall be
included in all copies or substantial portions of the Software.

THE SOFTWARE IS PROVIDED "AS IS", WITHOUT WARRANTY OF ANY KIND,
EXPRESS OR IMPLIED, INCLUDING BUT NOT LIMITED TO THE WARRANTIES
OF MERCHANTABILITY, FITNESS FOR A PARTICULAR PURPOSE AND
NONINFRINGEMENT. IN NO EVENT SHALL THE AUTHORS OR COPYRIGHT
HOLDERS BE LIABLE FOR ANY CLAIM, DAMAGES OR OTHER LIABILITY,
WHETHER IN AN ACTION OF CONTRACT, TORT OR OTHERWISE, ARISING
FROM, OUT OF OR IN CONNECTION WITH THE SOFTWARE OR THE USE OR
OTHER DEALINGS IN THE SOFTWARE.

Open Source Information

Copyright (C) 2011 Milo Yip

Permission is hereby granted, free of charge, to any person obtaining a copy of this software and associated documentation files (the "Software"), to deal in the Software without restriction, including without limitation the rights to use, copy, modify, merge, publish, distribute, sublicense, and/or sell copies of the Software, and to permit persons to whom the Software is furnished to do so, subject to the following conditions:

The above copyright notice and this permission notice shall be included in all copies or substantial portions of the Software.

THE SOFTWARE IS PROVIDED "AS IS", WITHOUT WARRANTY OF ANY KIND, EXPRESS OR IMPLIED, INCLUDING BUT NOT LIMITED TO THE WARRANTIES OF MERCHANTABILITY, FITNESS FOR A PARTICULAR PURPOSE AND NONINFRINGEMENT. IN NO EVENT SHALL THE AUTHORS OR COPYRIGHT HOLDERS BE LIABLE FOR ANY CLAIM, DAMAGES OR OTHER LIABILITY, WHETHER IN AN ACTION OF CONTRACT, TORT OR OTHERWISE, ARISING FROM, OUT OF OR IN CONNECTION WITH THE SOFTWARE OR THE USE OR OTHER DEALINGS IN THE SOFTWARE.

COPYRIGHT AND PERMISSION NOTICE

Copyright (c) 1996 - 2010, Daniel Stenberg, <daniel@haxx.se>.

All rights reserved.

Permission to use, copy, modify, and distribute this software for any purpose with or without fee is hereby granted, provided that the above copyright notice and this permission notice appear in all copies.

THE SOFTWARE IS PROVIDED "AS IS", WITHOUT WARRANTY OF ANY KIND, EXPRESS OR IMPLIED, INCLUDING BUT NOT LIMITED TO THE WARRANTIES OF MERCHANTABILITY, FITNESS FOR A PARTICULAR PURPOSE AND NONINFRINGEMENT OF THIRD PARTY RIGHTS. IN NO EVENT SHALL THE AUTHORS OR COPYRIGHT HOLDERS BE LIABLE FOR ANY CLAIM, DAMAGES OR OTHER LIABILITY, WHETHER IN AN ACTION OF CONTRACT, TORT OR OTHERWISE, ARISING FROM, OUT OF OR IN CONNECTION WITH THE SOFTWARE OR THE USE OR OTHER DEALINGS IN THE SOFTWARE.

Except as contained in this notice, the name of a copyright holder shall not be used in advertising or otherwise to promote the sale, use or other dealings in this Software without prior written authorization of the copyright holder.